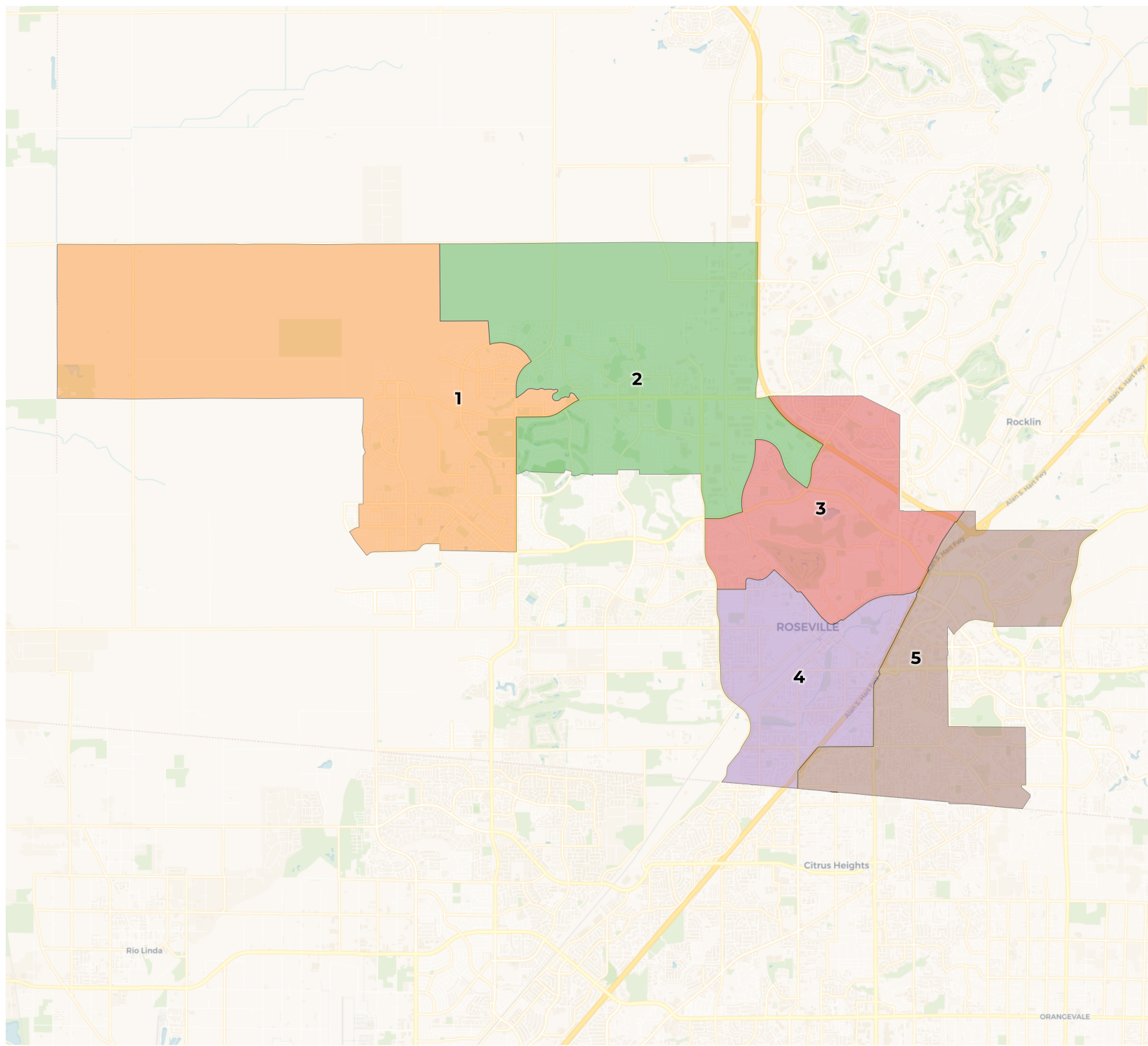




REDISTRICTING PARTNERS

Roseville City School District

Public Plan 8, "Jessup University 7"



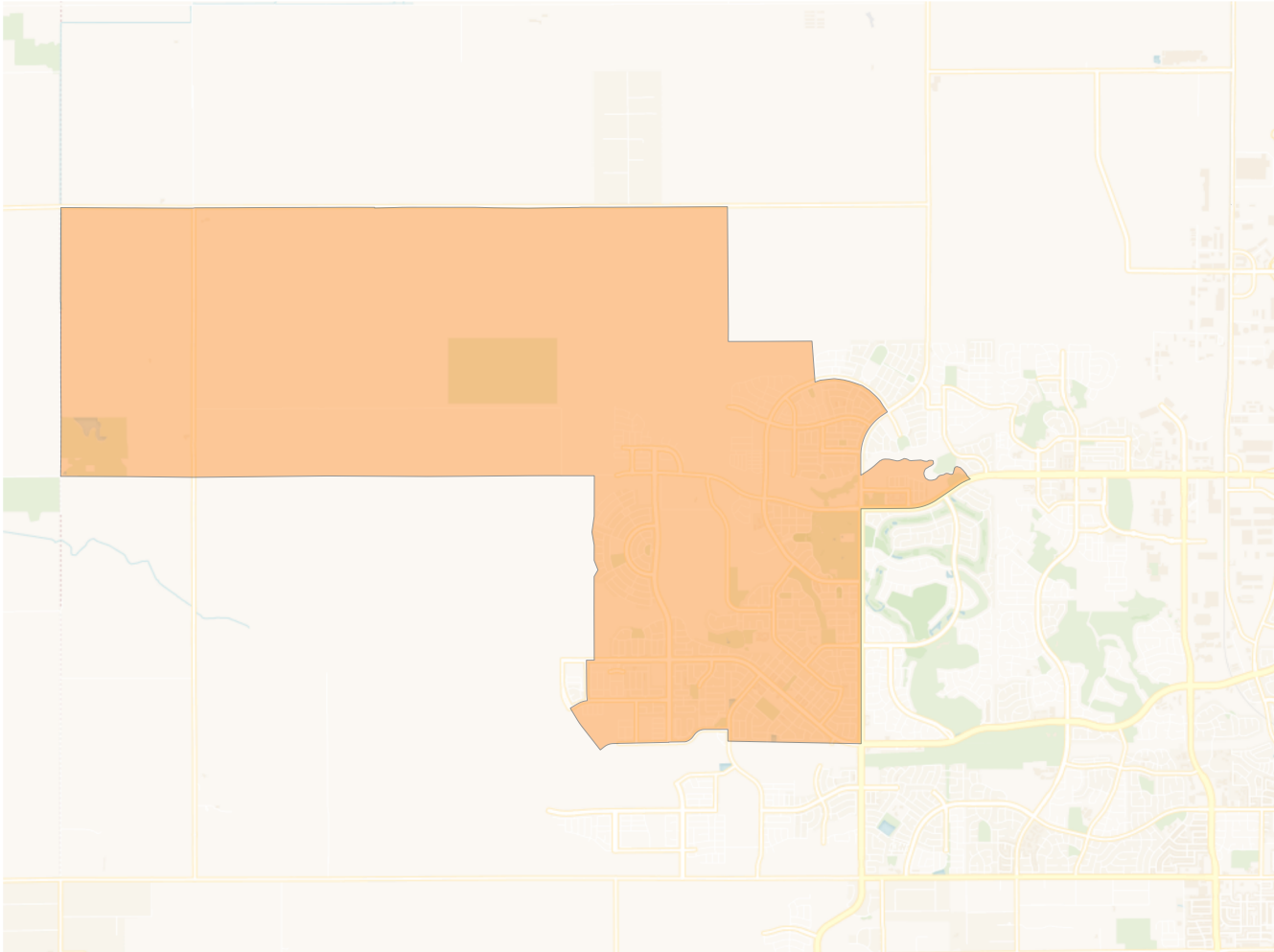
2020 Census

	1	2	3	4	5
Population	21,239	21,538	22,995	22,439	22,748
Deviation	-953	-654	803	247	556
Deviation %	-4.3%	-2.9%	3.6%	1.1%	2.5%
Other	12,452	14,880	15,832	15,041	16,862
Other %	58.6%	69.1%	68.8%	67.0%	74.1%
Latino	2,923	2,631	3,602	5,965	3,499
Latino %	13.8%	12.2%	15.7%	26.6%	15.4%
Asian	5,164	3,432	2,938	1,000	2,023
Asian %	24.3%	15.9%	12.8%	4.5%	8.9%
Black	700	595	623	433	364
Black %	3.3%	2.8%	2.7%	1.9%	1.6%

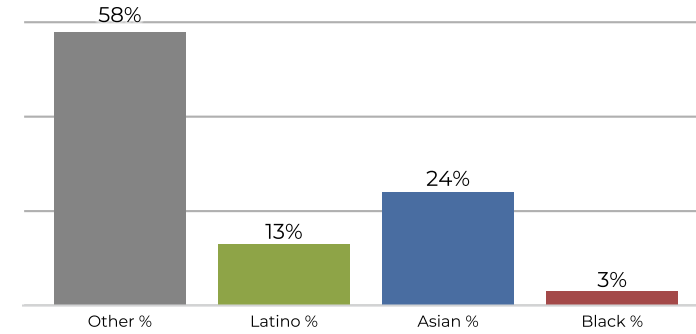
Citizen Voting Age Population (CVAP)

	1	2	3	4	5
Total CVAP	9,623	14,675	16,683	14,947	15,405
Other CVAP	6,068	11,007	13,126	10,834	12,369
Other CVAP %	63.1%	75.0%	78.7%	72.5%	80.3%
Latino CVAP	918	1,336	1,915	3,190	1,693
Latino CVAP %	9.5%	9.1%	11.5%	21.3%	11.0%
Asian CVAP	2,460	2,118	1,079	584	1,061
Asian CVAP %	25.6%	14.4%	6.5%	3.9%	6.9%
Black CVAP	177	214	563	339	282
Black CVAP %	1.8%	1.5%	3.4%	2.3%	1.8%

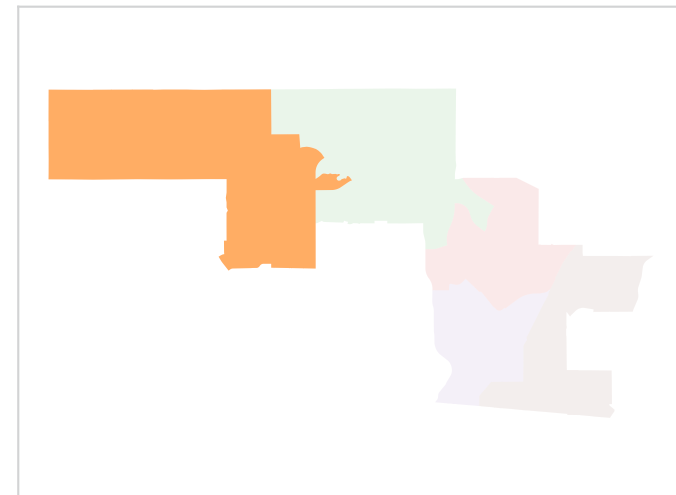
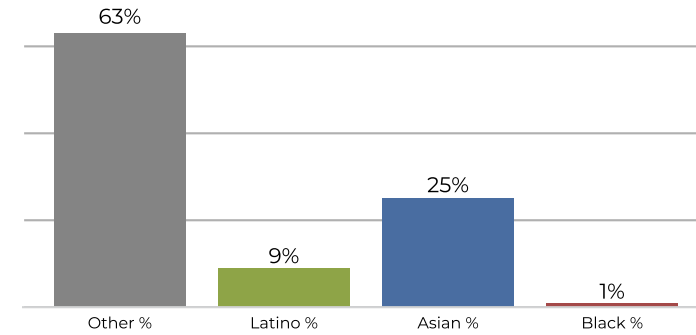
District 1



2020 Census

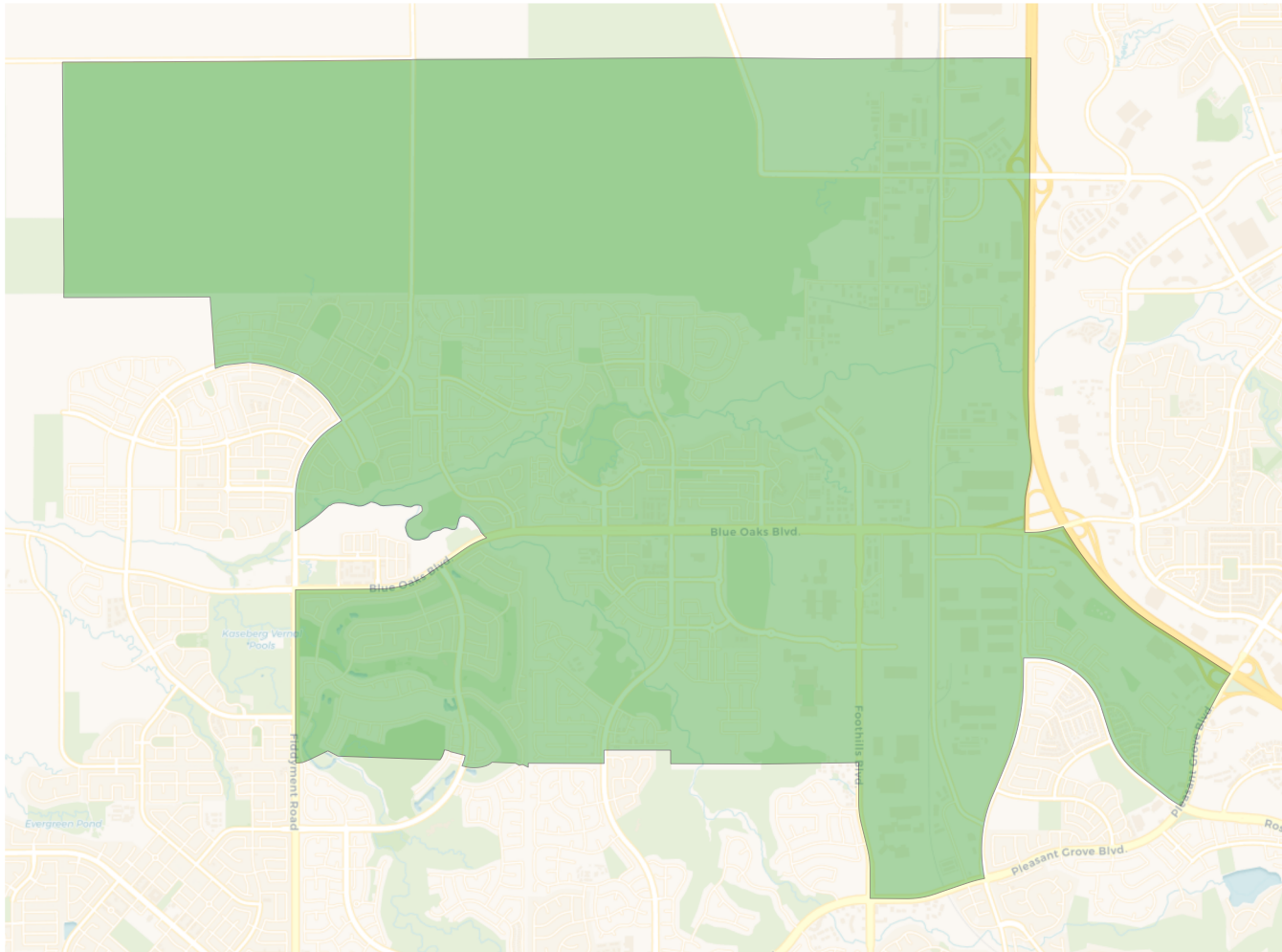


Citizen Voting Age Population

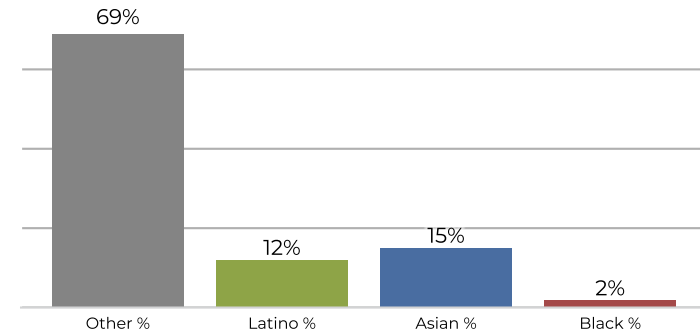


Population	Deviation	Deviation %	Other	Other %	Latino	Latino %	Asian	Asian %	Black	Black %
21,239	-953	-4.3%	12,452	58.6%	2,923	13.8%	5,164	24.3%	700	3.3%
Total CVAP	Other CVAP	Other CVAP %	Latino CVAP	Latino CVAP %	Asian CVAP	Asian CVAP %	Black CVAP	Black CVAP %		
9,623	6,068	63.1%	918	9.5%	2,460	25.6%	177	1.8%		

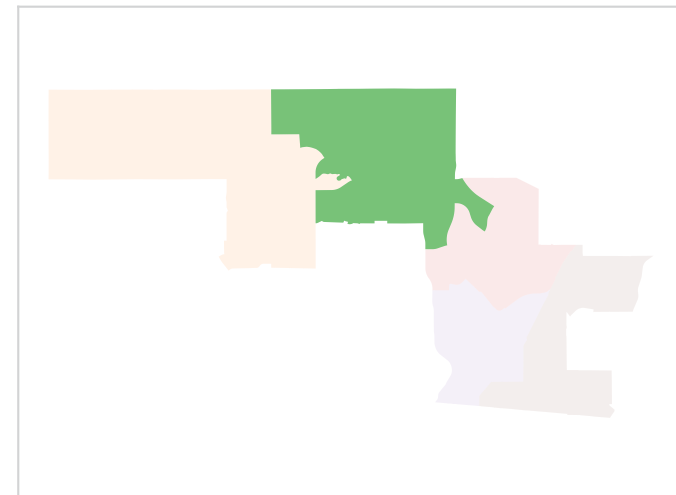
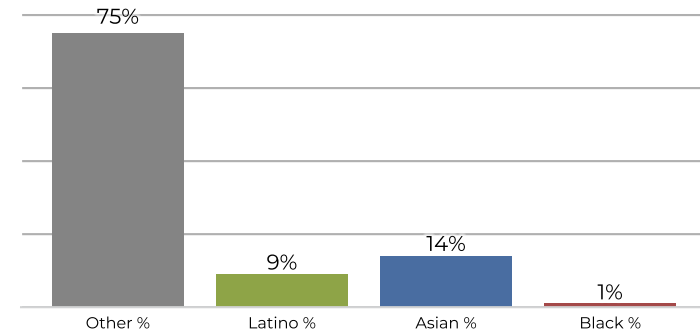
District 2



2020 Census

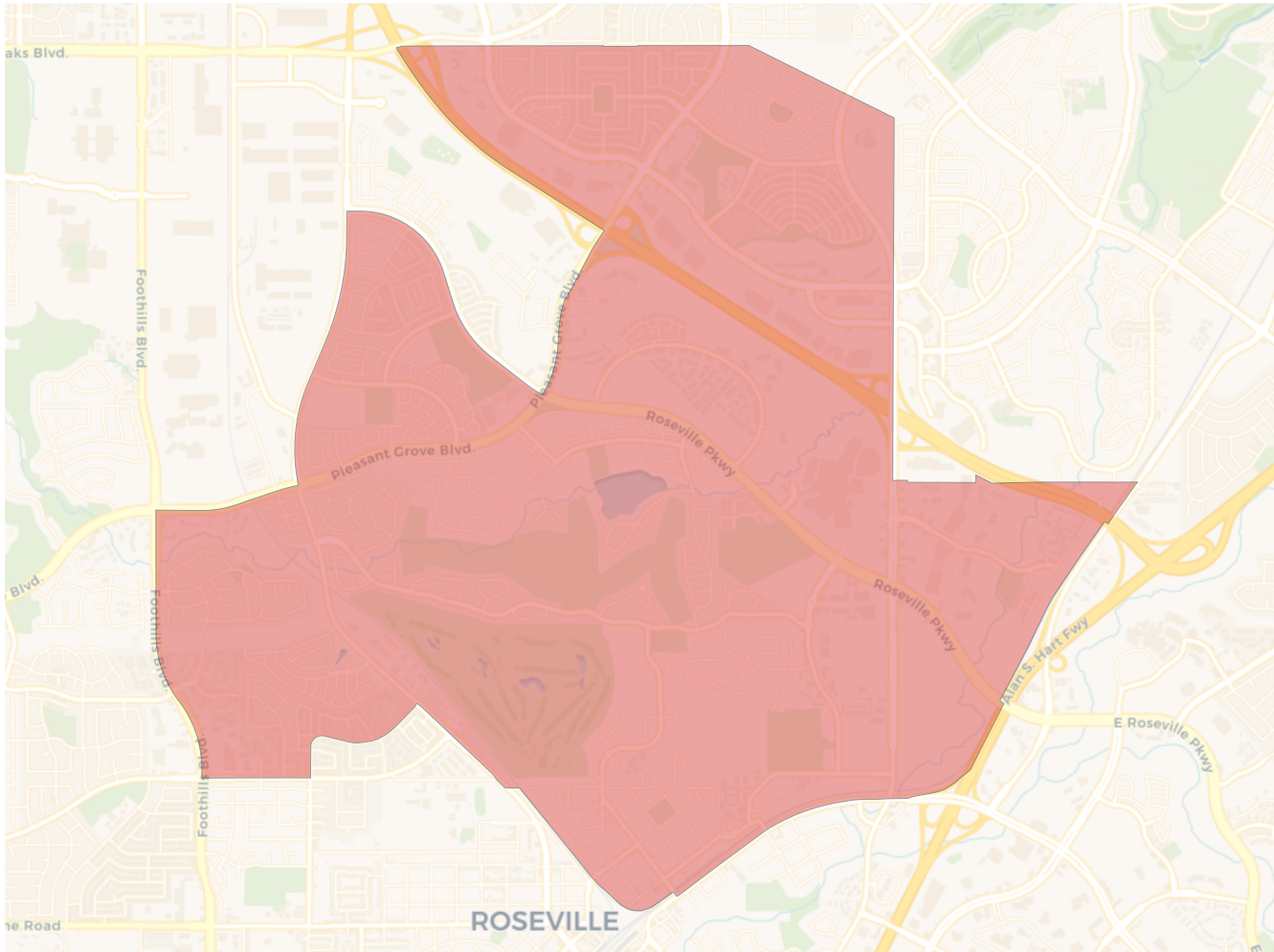


Citizen Voting Age Population

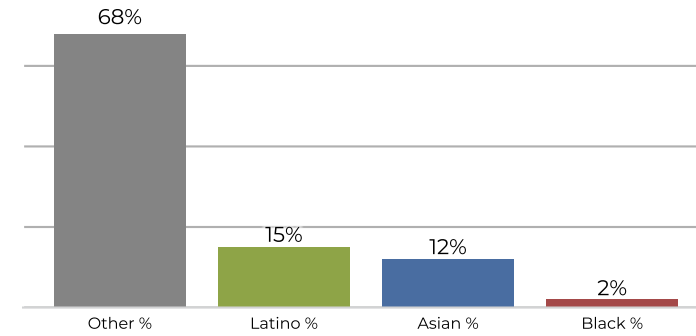


Population	Deviation	Deviation %	Other	Other %	Latino	Latino %	Asian	Asian %	Black	Black %
21,538	-654	-2.9%	14,880	69.1%	2,631	12.2%	3,432	15.9%	595	2.8%
Total CVAP	Other CVAP	Other CVAP %	Latino CVAP	Latino CVAP %	Asian CVAP	Asian CVAP %	Black CVAP	Black CVAP %		
14,675	11,007	75.0%	1,336	9.1%	2,118	14.4%	214	1.5%		

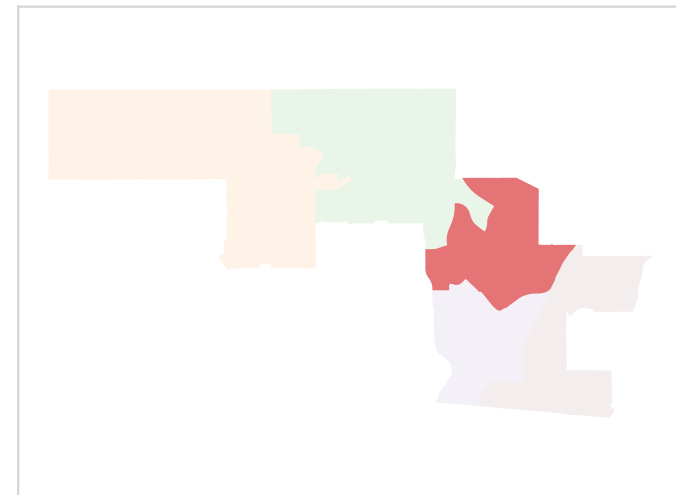
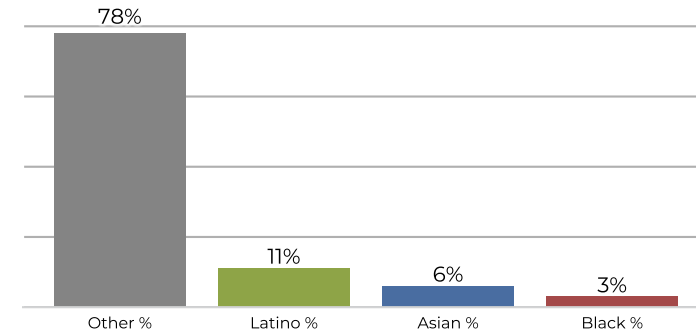
District 3



2020 Census

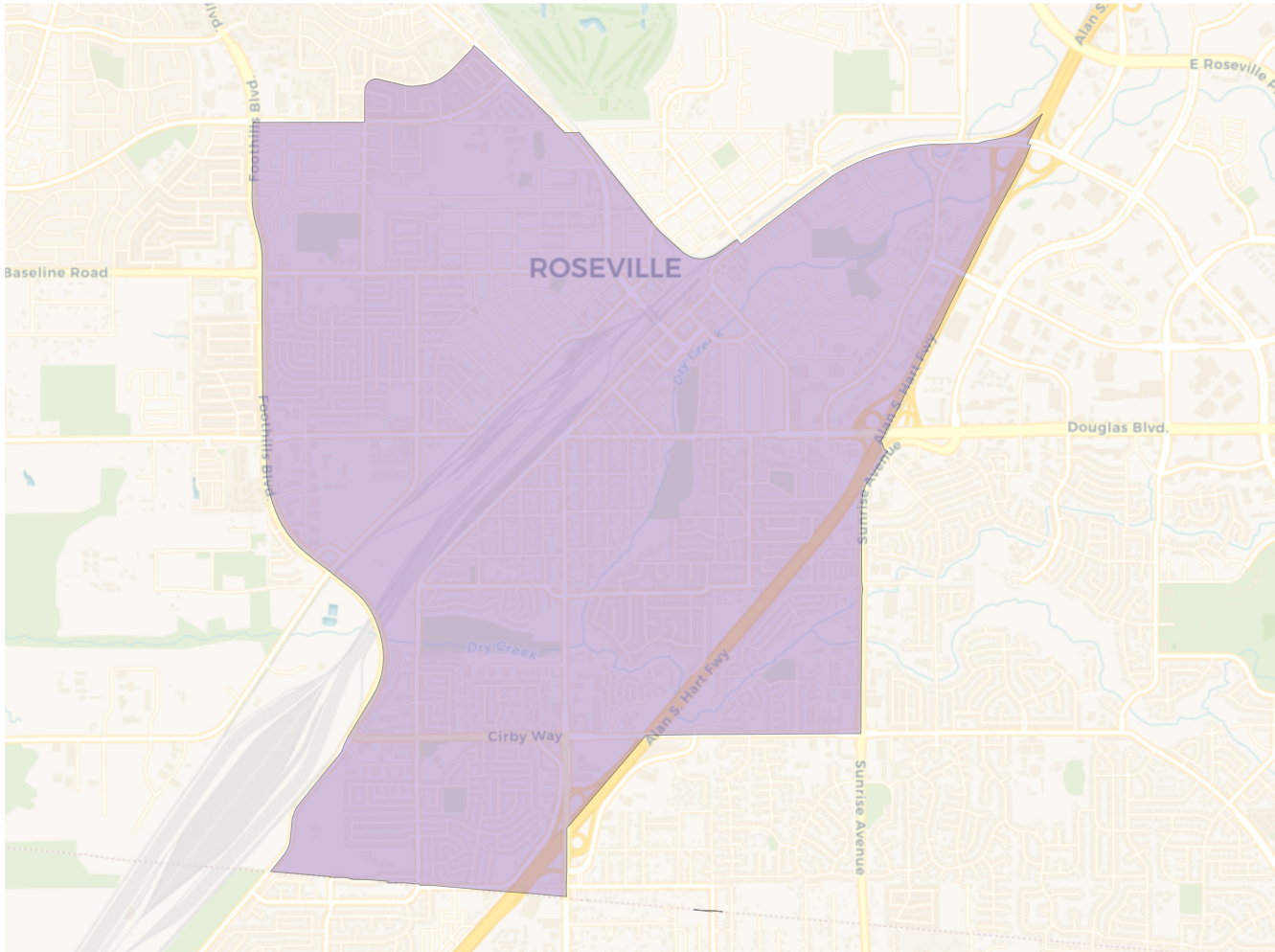


Citizen Voting Age Population

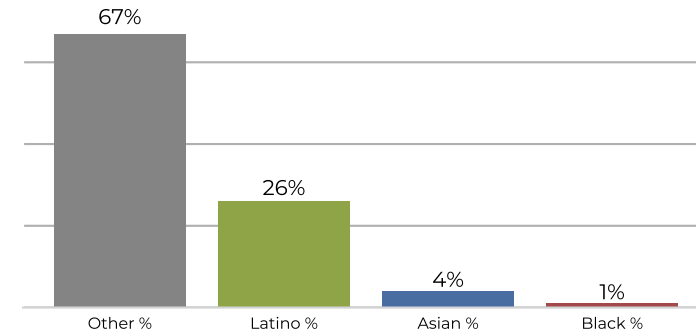


Population	Deviation	Deviation %	Other	Other %	Latino	Latino %	Asian	Asian %	Black	Black %
22,995	803	3.6%	15,832	68.8%	3,602	15.7%	2,938	12.8%	623	2.7%
Total CVAP	Other CVAP	Other CVAP %	Latino CVAP	Latino CVAP %	Asian CVAP	Asian CVAP %	Black CVAP	Black CVAP %		
16,683	13,126	78.7%	1,915	11.5%	1,079	6.5%	563	3.4%		

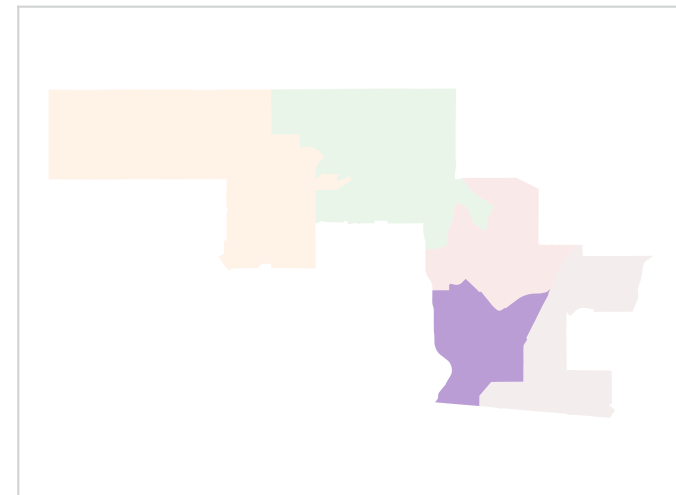
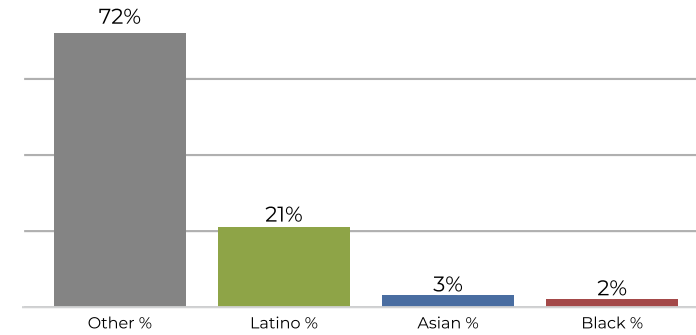
District 4



2020 Census

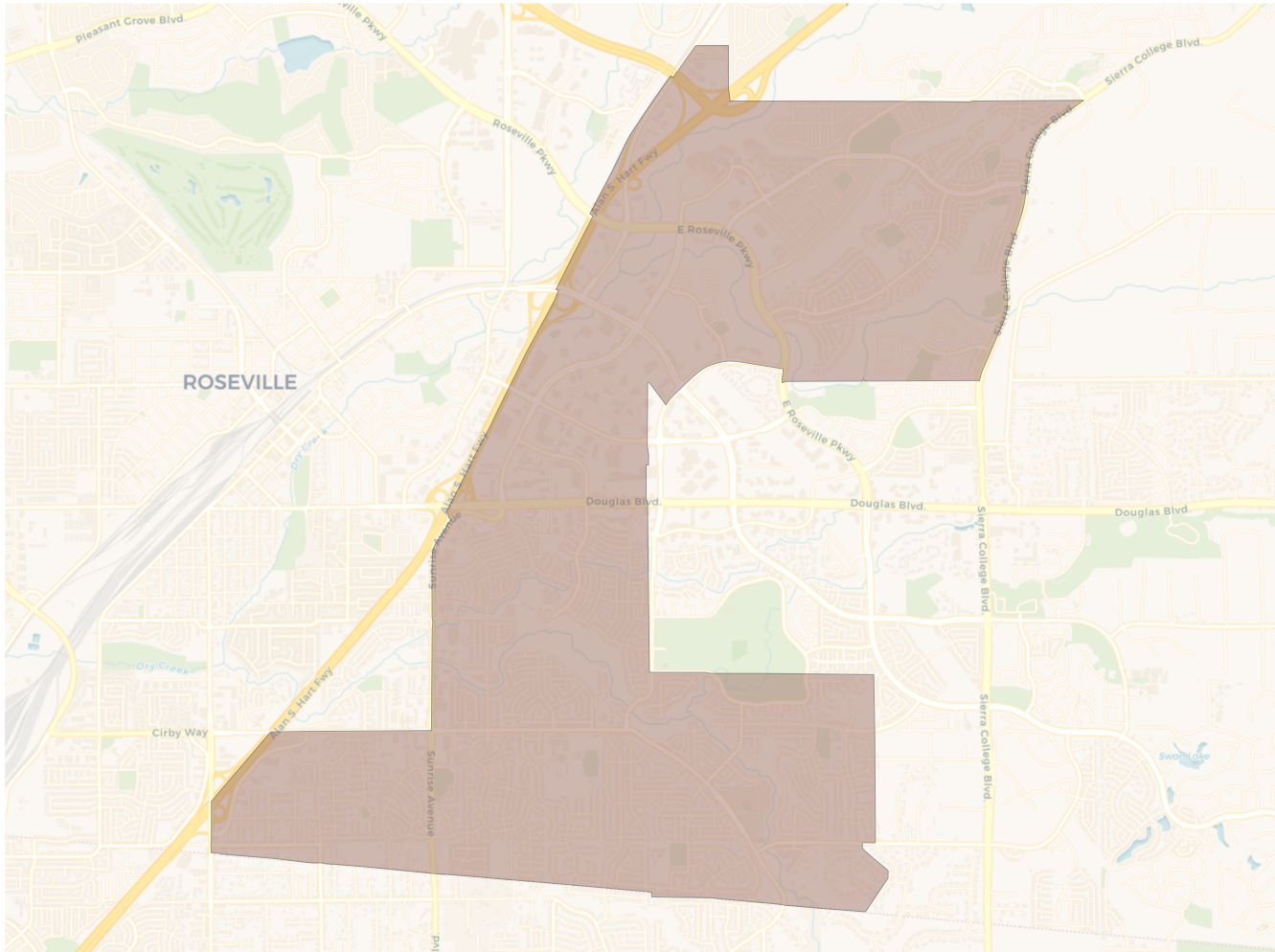


Citizen Voting Age Population

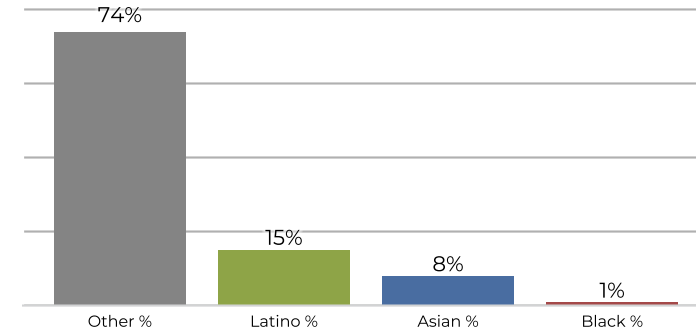


Population	Deviation	Deviation %	Other	Other %	Latino	Latino %	Asian	Asian %	Black	Black %
22,439	247	1.1%	15,041	67.0%	5,965	26.6%	1,000	4.5%	433	1.9%
Total CVAP	Other CVAP	Other CVAP %	Latino CVAP	Latino CVAP %	Asian CVAP	Asian CVAP %	Black CVAP	Black CVAP %		
14,947	10,834	72.5%	3,190	21.3%	584	3.9%	339	2.3%		

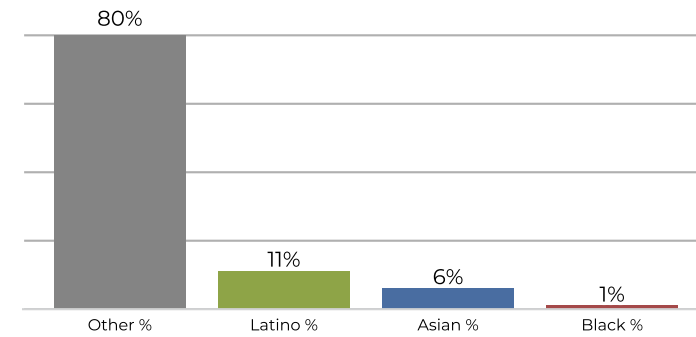
District 5



2020 Census



Citizen Voting Age Population



Population	Deviation	Deviation %	Other	Other %	Latino	Latino %	Asian	Asian %	Black	Black %
22,748	556	2.5%	16,862	74.1%	3,499	15.4%	2,023	8.9%	364	1.6%
Total CVAP	Other CVAP	Other CVAP %	Latino CVAP	Latino CVAP %	Asian CVAP	Asian CVAP %	Black CVAP	Black CVAP %		
15,405	12,369	80.3%	1,693	11.0%	1,061	6.9%	282	1.8%		