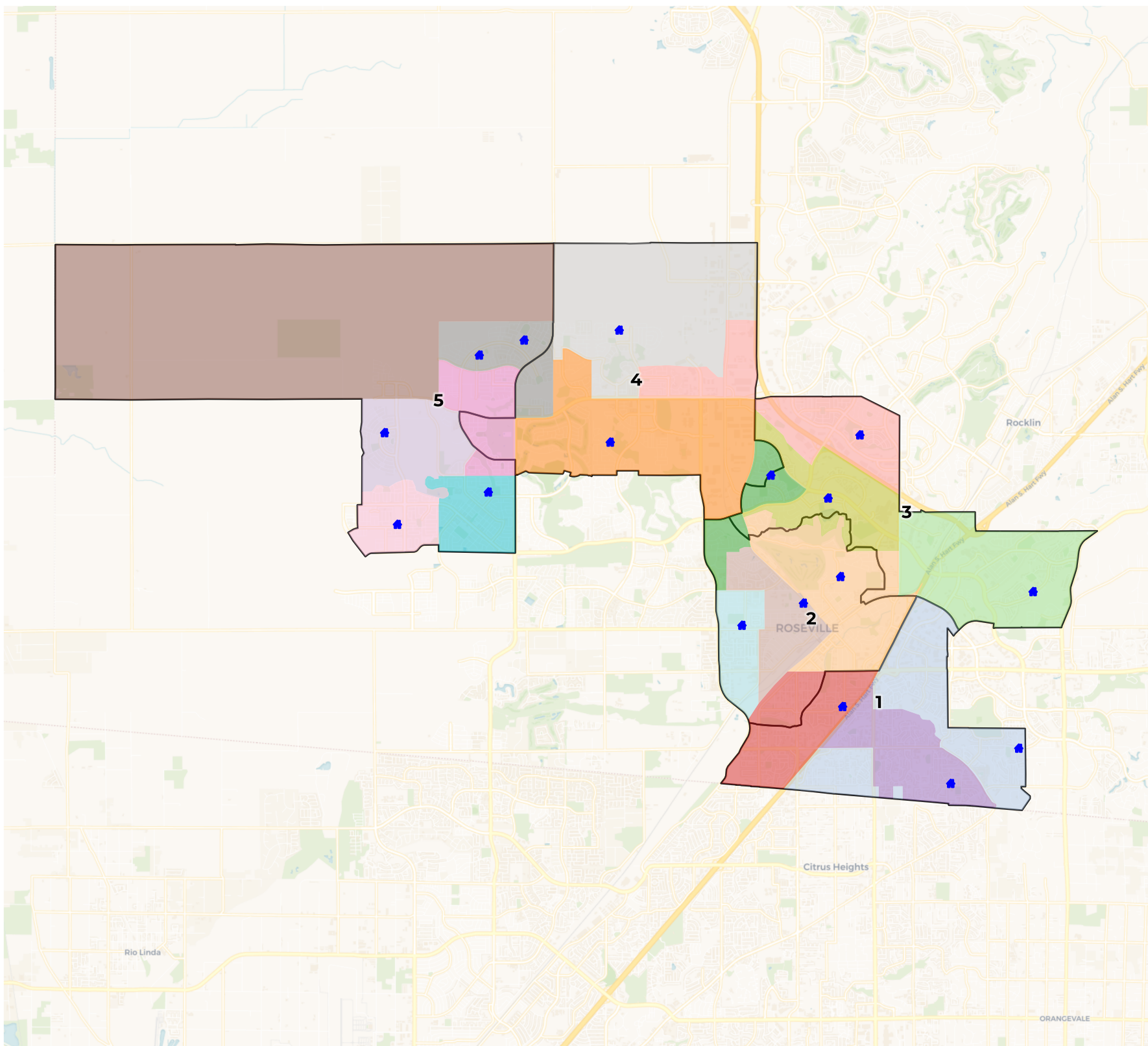


**REDISTRICTING
PARTNERS**

**Roseville City School
District**

Draft B with school attendance areas



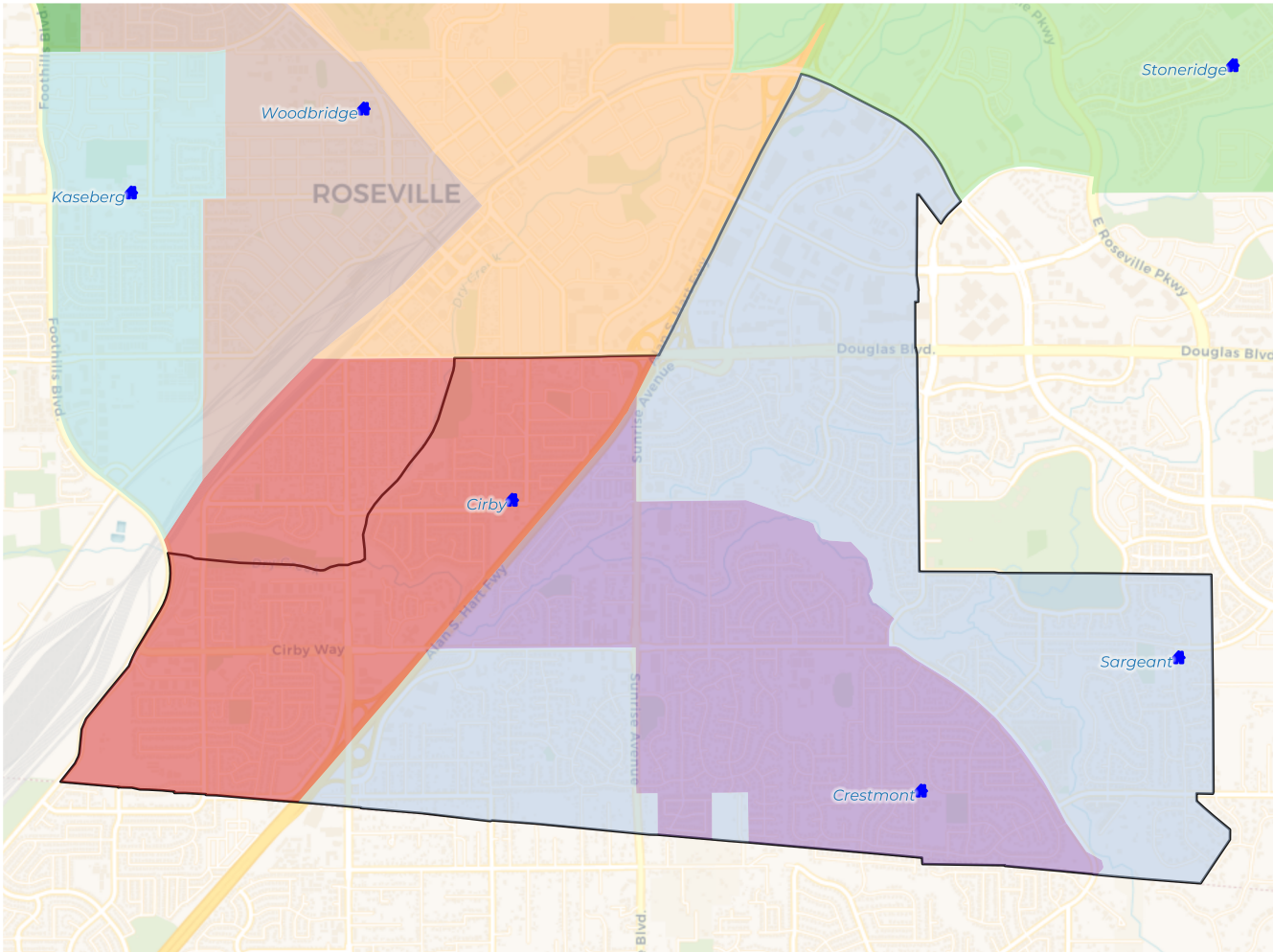
2020 Census

	1	2	3	4	5
Population	22,925	22,816	22,507	21,250	21,461
Deviation	733	624	315	-942	-731
Deviation %	3.3%	2.8%	1.4%	-4.2%	-3.3%
Other	17,235	15,318	15,271	14,762	12,481
Other %	75.2%	67.1%	67.9%	69.5%	58.2%
Latino	4,256	5,776	3,028	2,659	2,901
Latino %	18.6%	25.3%	13.5%	12.5%	13.5%
Asian	1,048	1,274	3,598	3,247	5,390
Asian %	4.6%	5.6%	16.0%	15.3%	25.1%
Black	386	448	610	582	689
Black %	1.7%	2.0%	2.7%	2.7%	3.2%

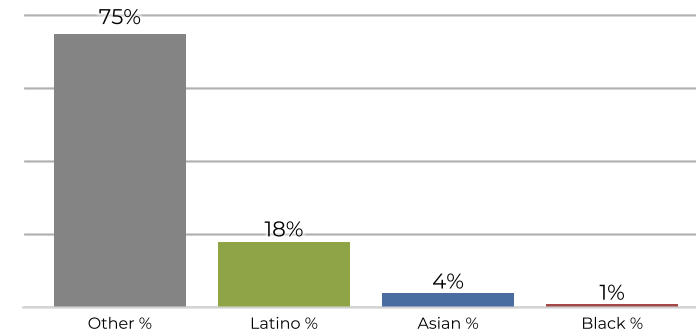
Citizen Voting Age Population (CVAP)

	1	2	3	4	5
Total CVAP	16,605	15,956	14,454	13,802	10,516
Other CVAP	13,230	12,239	11,062	10,457	6,416
Other CVAP %	79.7%	76.7%	76.5%	75.8%	61.0%
Latino CVAP	2,345	2,771	1,575	1,402	959
Latino CVAP %	14.1%	17.4%	10.9%	10.2%	9.1%
Asian CVAP	743	586	1,276	1,756	2,941
Asian CVAP %	4.5%	3.7%	8.8%	12.7%	28.0%
Black CVAP	287	360	541	187	200
Black CVAP %	1.7%	2.3%	3.7%	1.4%	1.9%

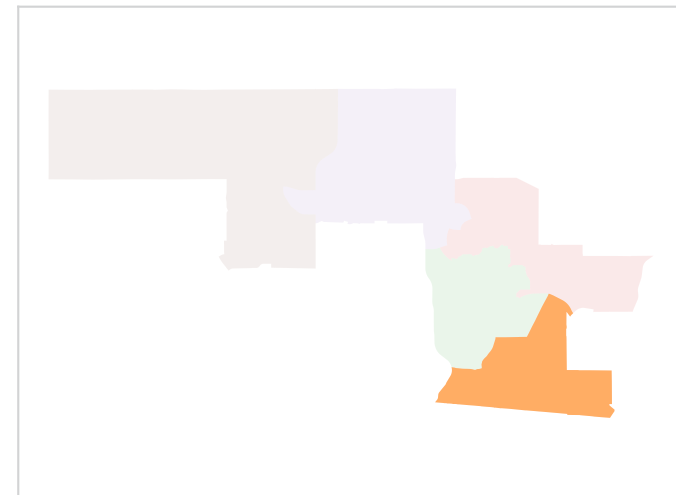
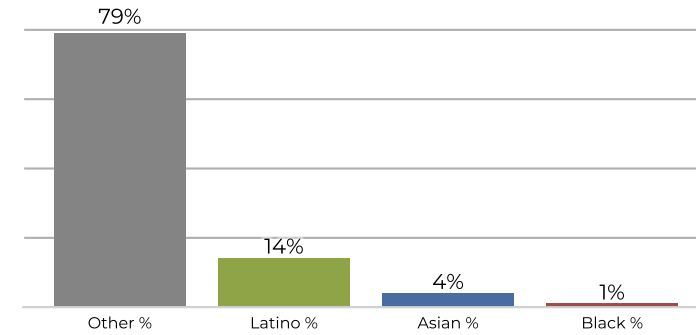
District 1



2020 Census

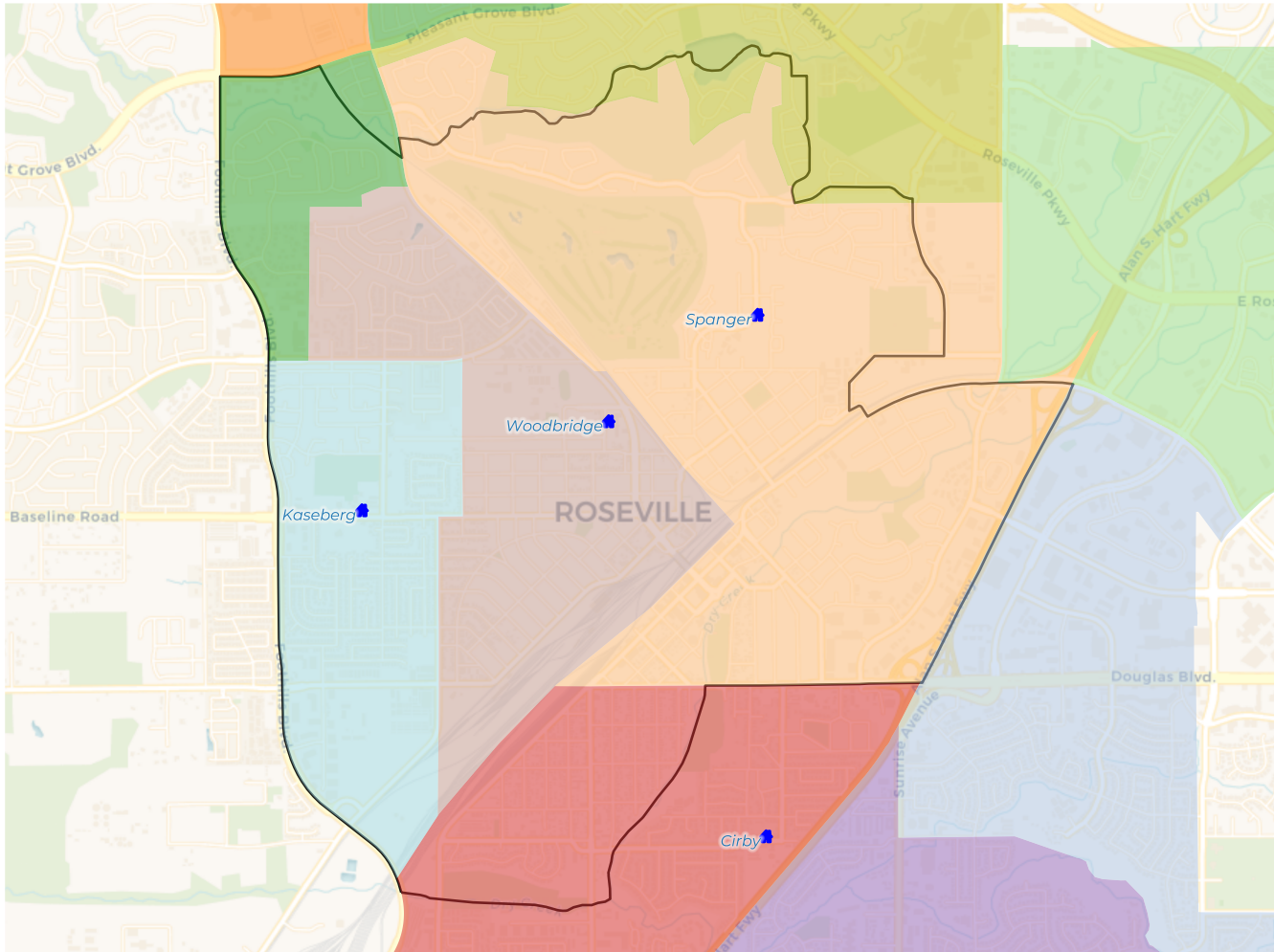


Citizen Voting Age Population

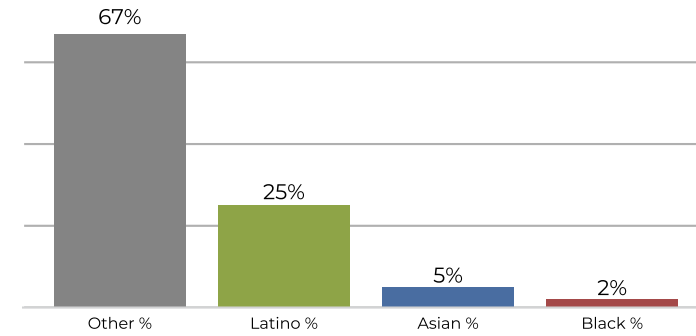


Population	Deviation	Deviation %	Other	Other %	Latino	Latino %	Asian	Asian %	Black	Black %
22,925	733	3.3%	17,235	75.2%	4,256	18.6%	1,048	4.6%	386	1.7%
Total CVAP	Other CVAP	Other CVAP %	Latino CVAP	Latino CVAP %	Asian CVAP	Asian CVAP %	Black CVAP	Black CVAP %		
16,605	13,230	79.7%	2,345	14.1%	743	4.5%	287	1.7%		

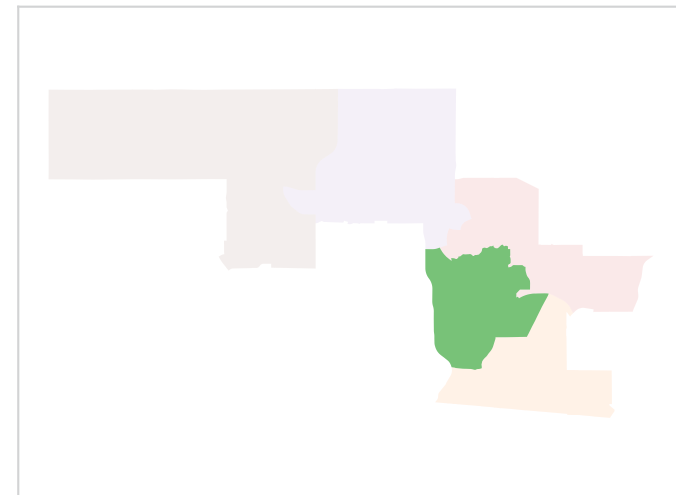
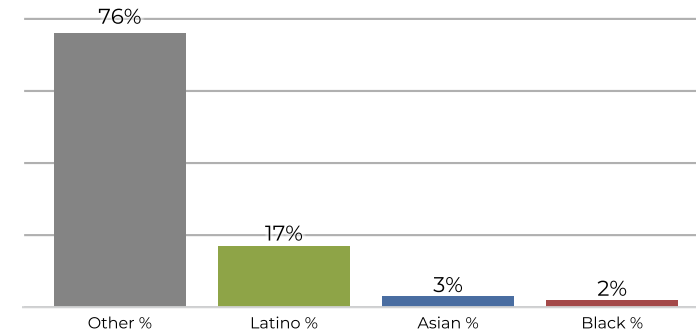
District 2



2020 Census

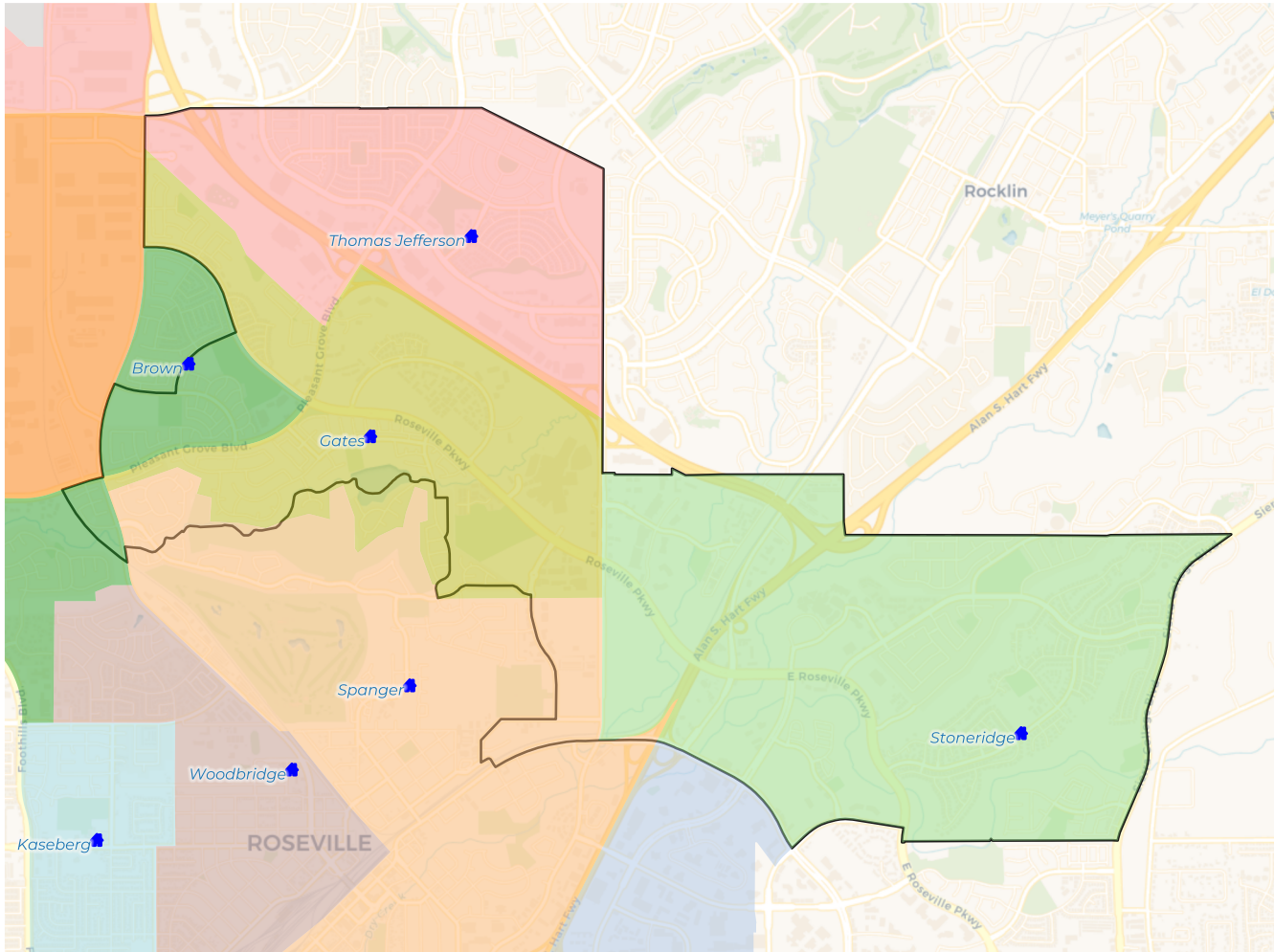


Citizen Voting Age Population

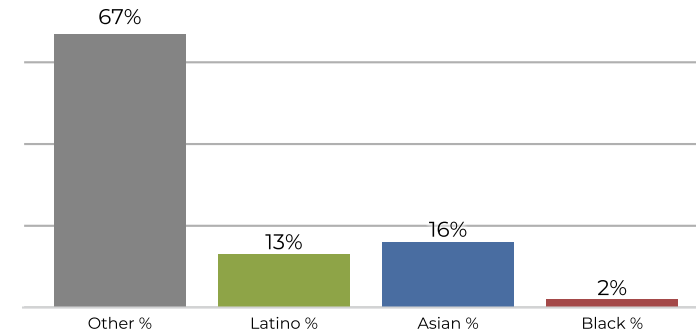


Population	Deviation	Deviation %	Other	Other %	Latino	Latino %	Asian	Asian %	Black	Black %
22,816	624	2.8%	15,318	67.1%	5,776	25.3%	1,274	5.6%	448	2.0%
Total CVAP	Other CVAP	Other CVAP %	Latino CVAP	Latino CVAP %	Asian CVAP	Asian CVAP %	Black CVAP	Black CVAP %		
15,956	12,239	76.7%	2,771	17.4%	586	3.7%	360	2.3%		

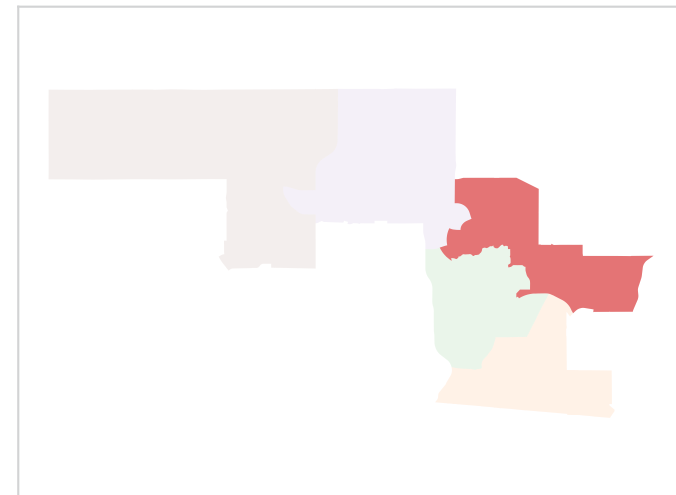
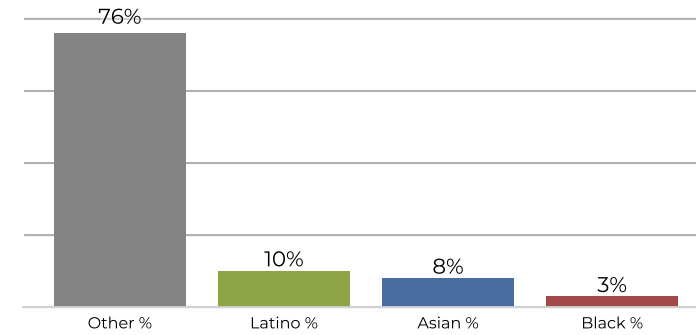
District 3



2020 Census

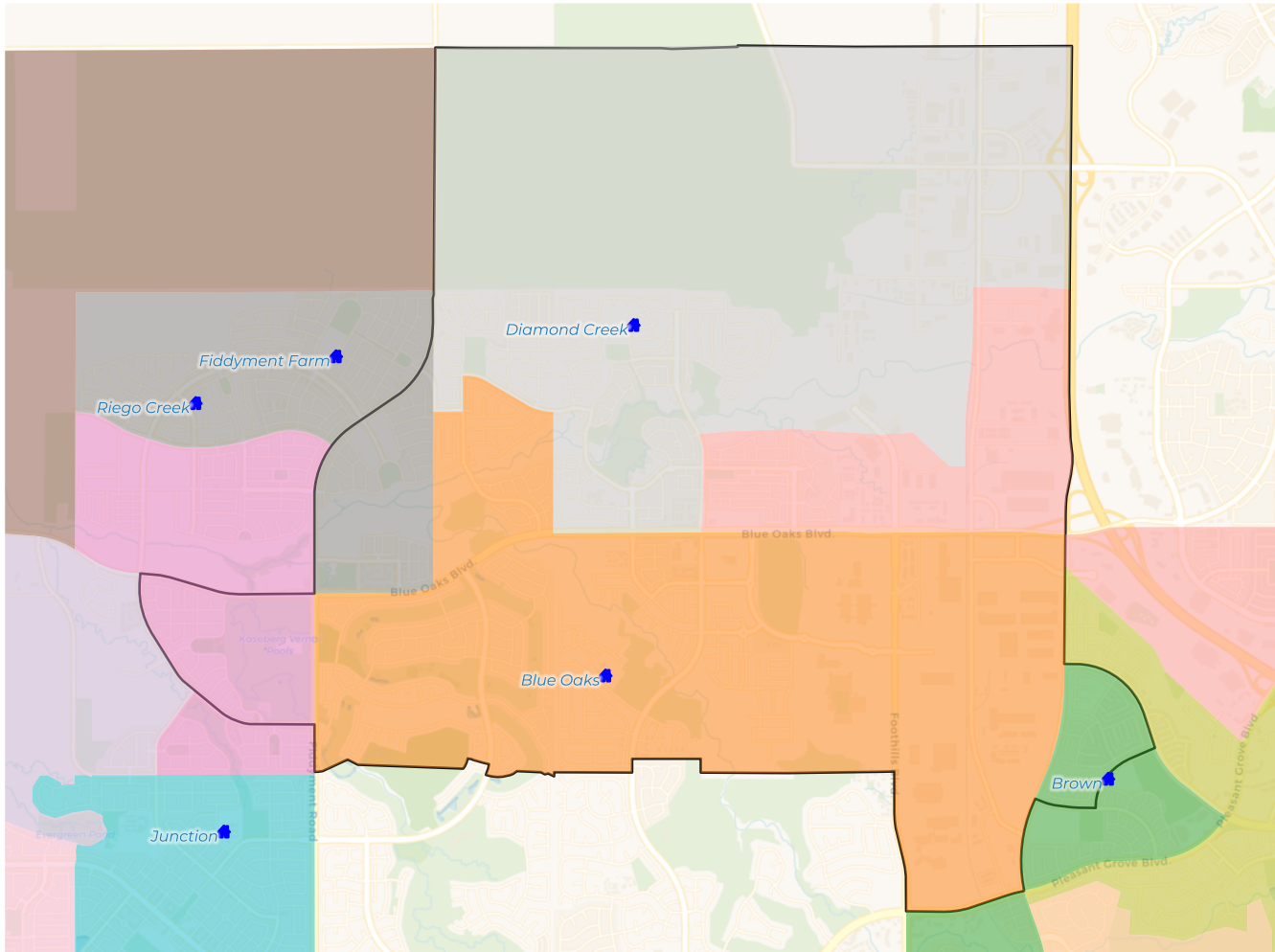


Citizen Voting Age Population

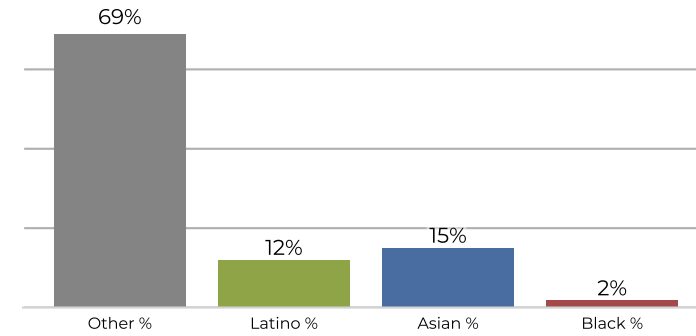


Population	Deviation	Deviation %	Other	Other %	Latino	Latino %	Asian	Asian %	Black	Black %
22,507	315	1.4%	15,271	67.9%	3,028	13.5%	3,598	16.0%	610	2.7%
Total CVAP	Other CVAP	Other CVAP %	Latino CVAP	Latino CVAP %	Asian CVAP	Asian CVAP %	Black CVAP	Black CVAP %		
14,454	11,062	76.5%	1,575	10.9%	1,276	8.8%	541	3.7%		

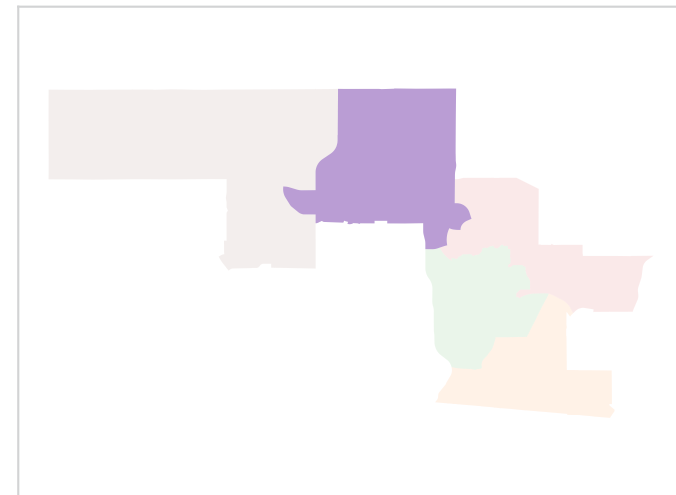
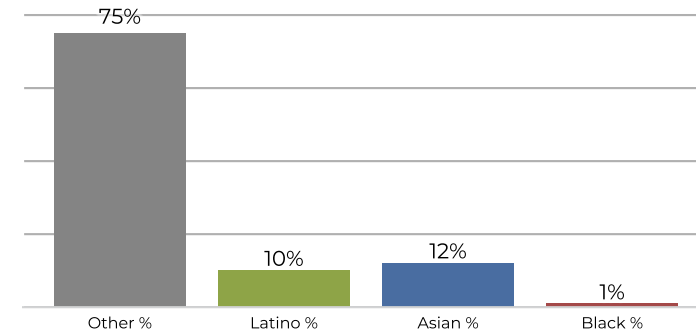
District 4



2020 Census

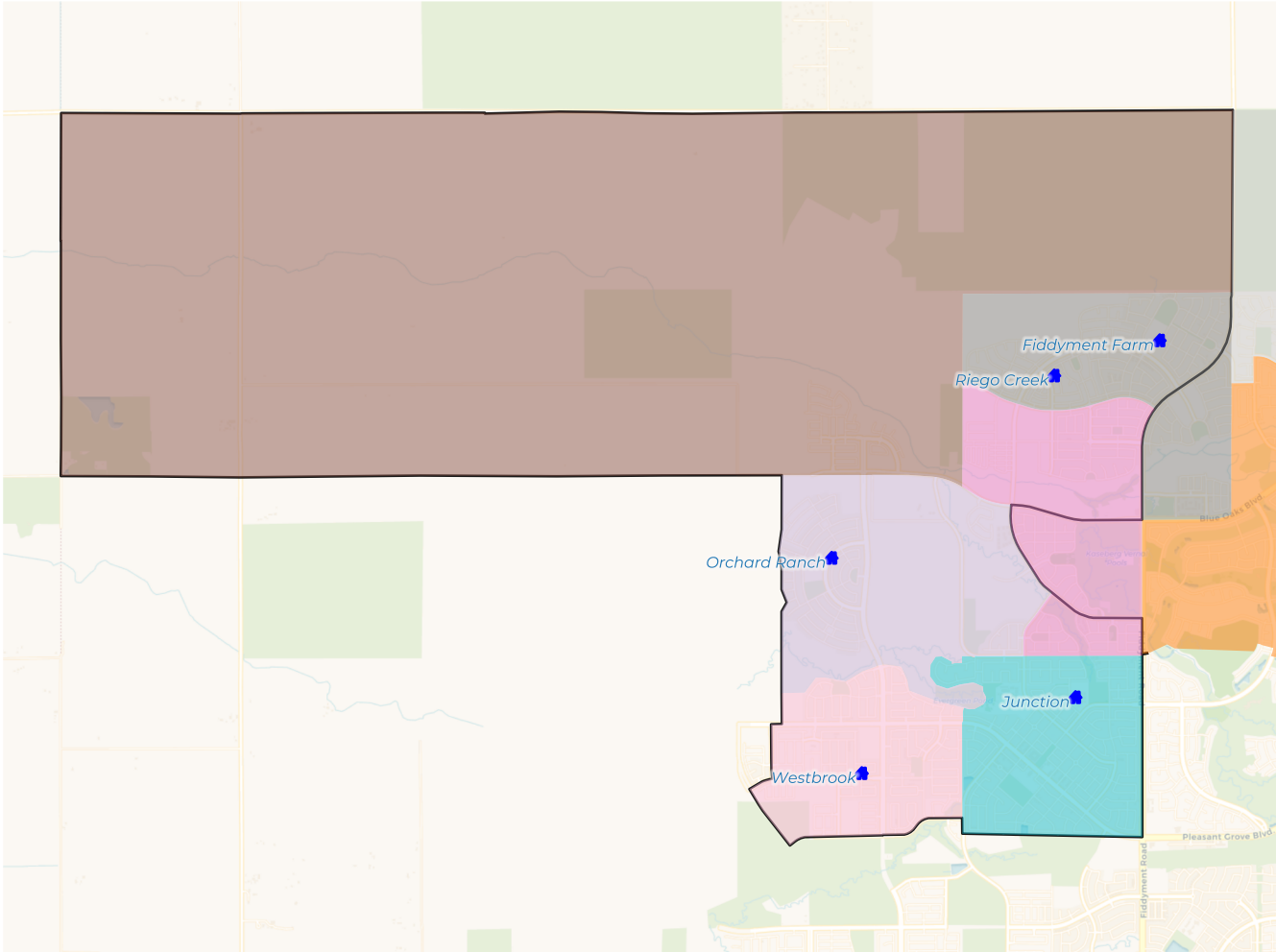


Citizen Voting Age Population

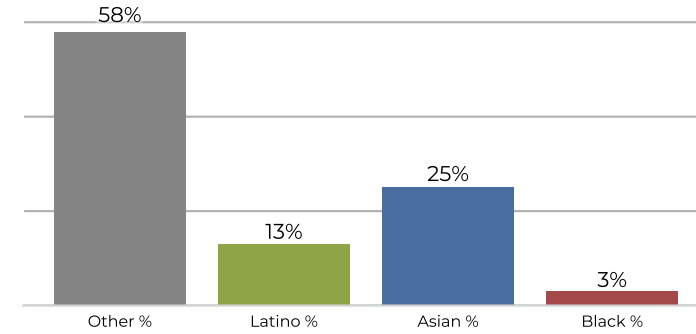


Population	Deviation	Deviation %	Other	Other %	Latino	Latino %	Asian	Asian %	Black	Black %
21,250	-942	-4.2%	14,762	69.5%	2,659	12.5%	3,247	15.3%	582	2.7%
Total CVAP	Other CVAP	Other CVAP %	Latino CVAP	Latino CVAP %	Asian CVAP	Asian CVAP %	Black CVAP	Black CVAP %		
13,802	10,457	75.8%	1,402	10.2%	1,756	12.7%	187	1.4%		

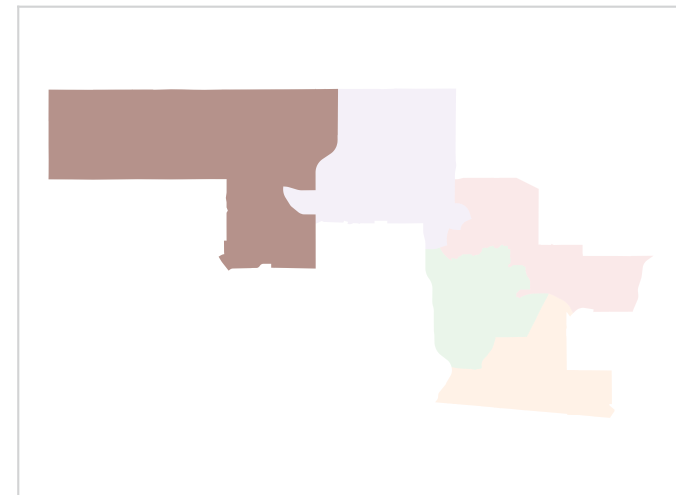
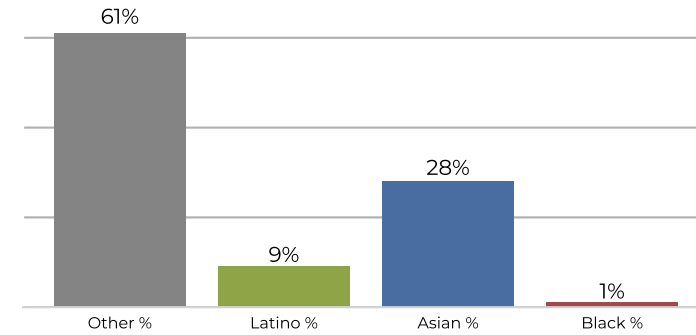
District 5



2020 Census



Citizen Voting Age Population



Population	Deviation	Deviation %	Other	Other %	Latino	Latino %	Asian	Asian %	Black	Black %
21,461	-731	-3.3%	12,481	58.2%	2,901	13.5%	5,390	25.1%	689	3.2%
Total CVAP	Other CVAP	Other CVAP %	Latino CVAP	Latino CVAP %	Asian CVAP	Asian CVAP %	Black CVAP	Black CVAP %		
10,516	6,416	61.0%	959	9.1%	2,941	28.0%	200	1.9%		