

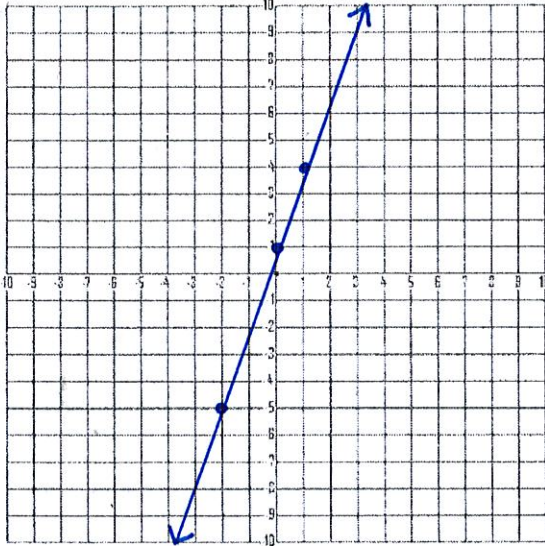
Equation of a line from a Table

Find the equation of a line from the table:

| X  | y  |
|----|----|
| -2 | -5 |
| 0  | 1  |
| 1  | 4  |

2 < > 6

$$\frac{\Delta y}{\Delta x} = \frac{6}{2} = \frac{3}{1}$$



Slope: 3      y-intercept: 1  
Equation:  $y = 3x + 1$

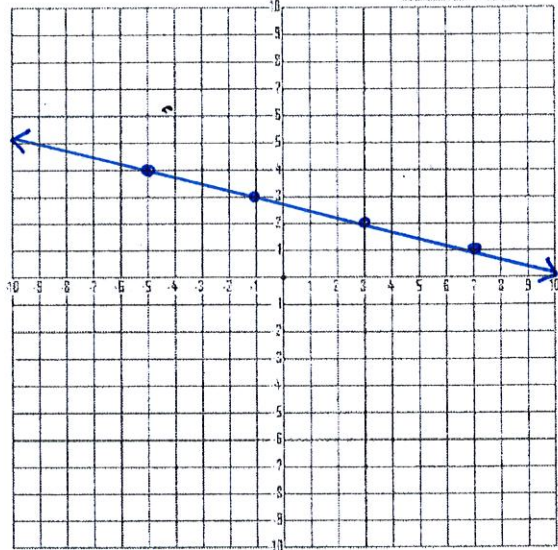
Steps:

1. Analyze the problem.
2. Graph the points.
3. Find the slope.
4. Find the y-intercept.
5. Write the equation of the line.

Find the equation of a line from the table:

| X  | y |
|----|---|
| -5 | 4 |
| -1 | 3 |
| 7  | 1 |

4 < > -1



Slope:  $-\frac{1}{4}$       y-intercept:  $2\frac{3}{4}$   
Equation:  $y = -\frac{1}{4}x + 2\frac{3}{4}$