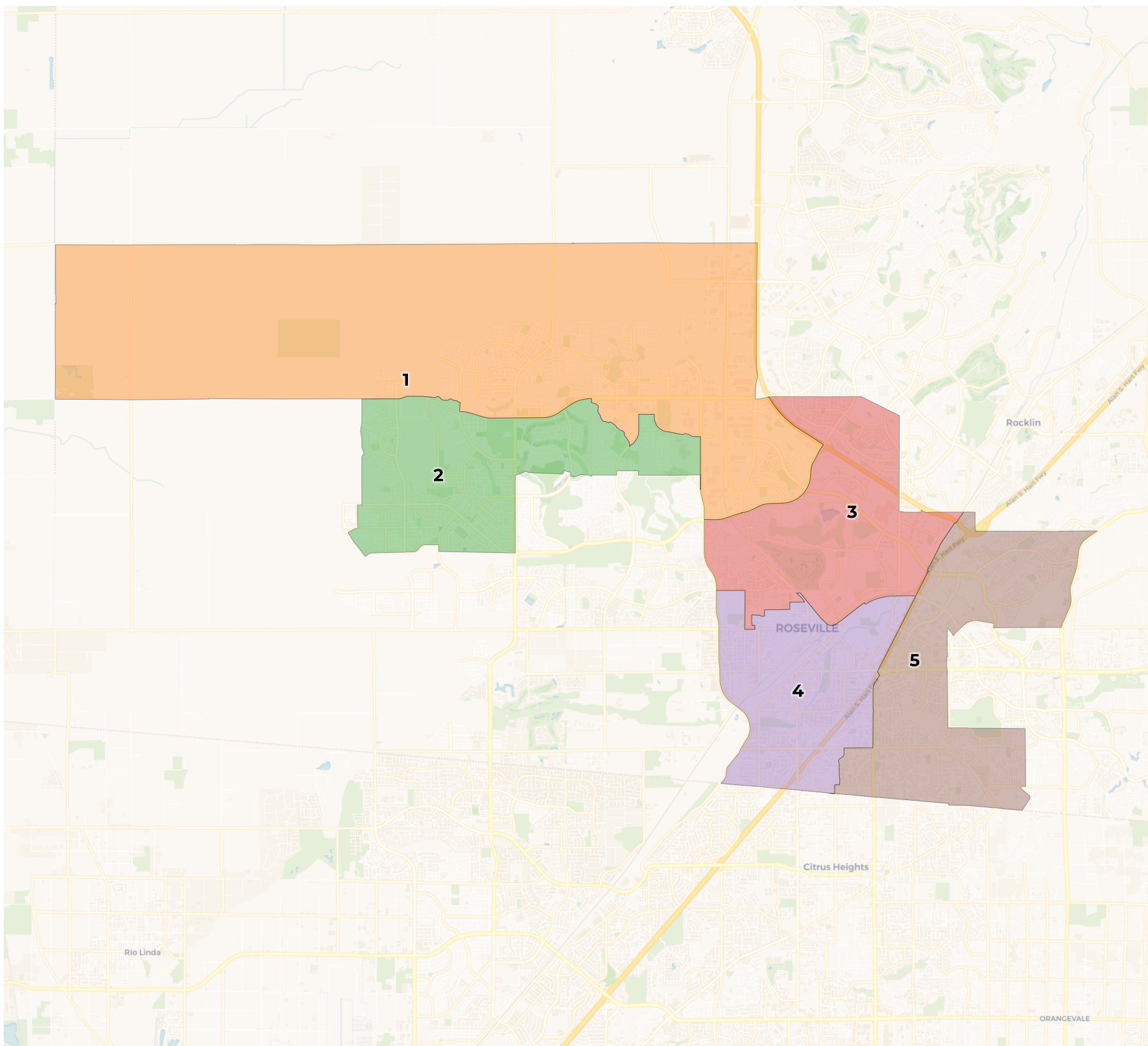


**REDISTRICTING
PARTNERS**

**Roseville City School
District**

Public Plan 4, "Jessup University 3"



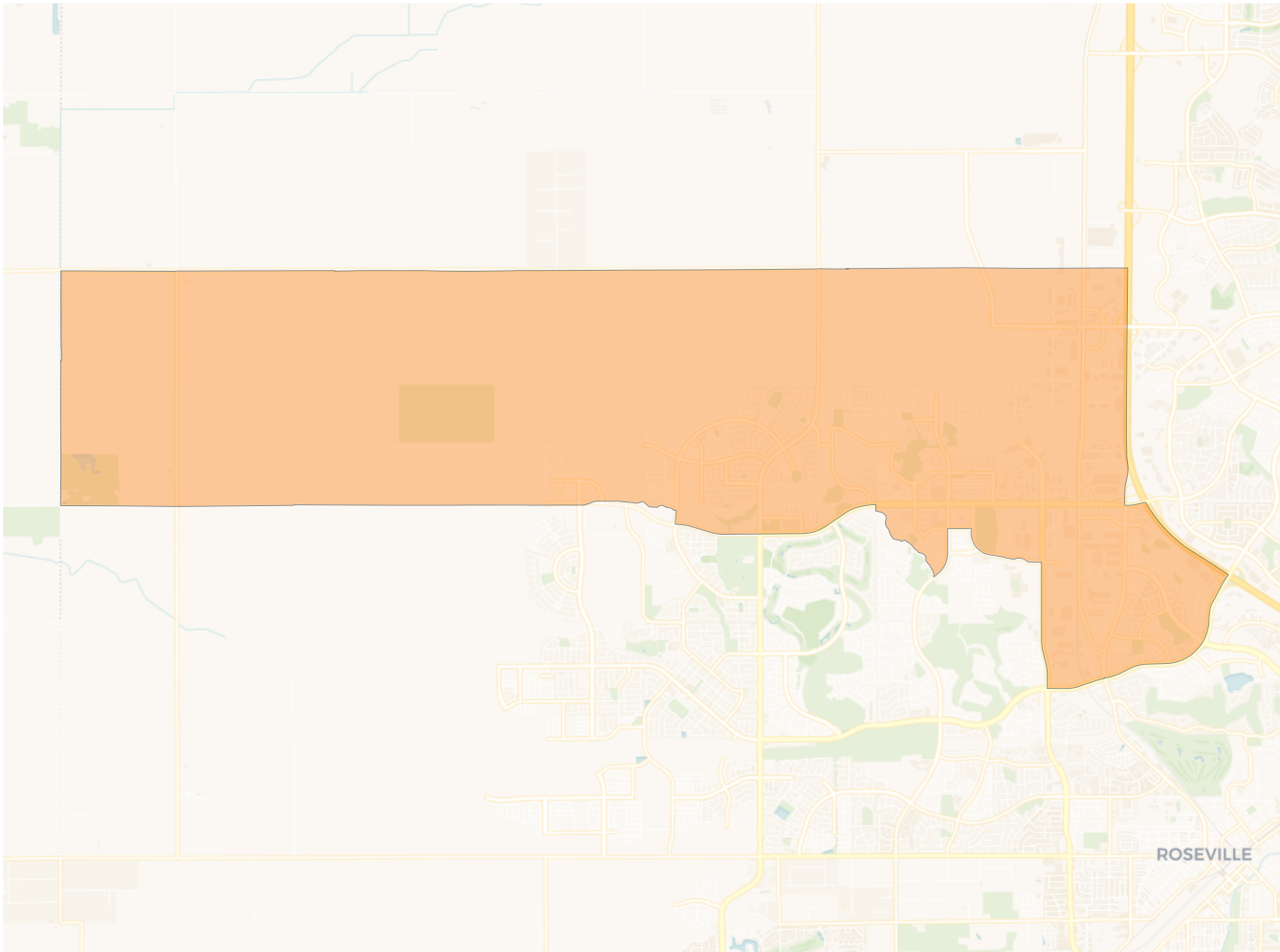
2020 Census

	1	2	3	4	5
Population	22,942	22,542	21,989	21,740	21,746
Deviation	750	350	-203	-452	-446
Deviation %	3.4%	1.6%	-0.9%	-2.0%	-2.0%
Other	14,901	14,293	15,086	14,696	16,091
Other %	65.0%	63.4%	68.6%	67.6%	74.0%
Latino	3,129	2,839	3,561	5,750	3,341
Latino %	13.6%	12.6%	16.2%	26.4%	15.4%
Asian	4,246	4,737	2,701	906	1,967
Asian %	18.5%	21.0%	12.3%	4.2%	9.0%
Black	666	673	641	388	347
Black %	2.9%	3.0%	2.9%	1.8%	1.6%

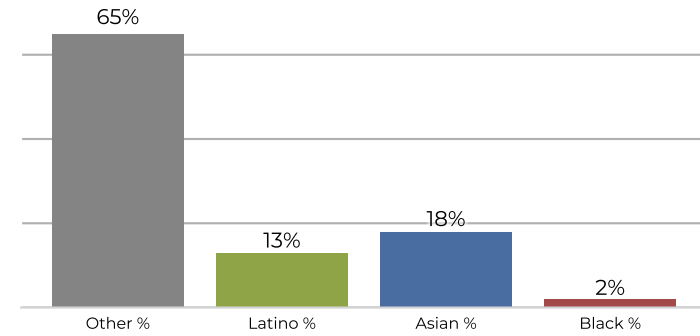
Citizen Voting Age Population (CVAP)

	1	2	3	4	5
Total CVAP	13,687	12,411	16,163	14,483	14,589
Other CVAP	9,633	8,777	12,648	10,554	11,792
Other CVAP %	70.4%	70.7%	78.3%	72.9%	80.8%
Latino CVAP	1,435	1,044	2,028	2,989	1,556
Latino CVAP %	10.5%	8.4%	12.5%	20.6%	10.7%
Asian CVAP	2,455	2,363	858	649	977
Asian CVAP %	17.9%	19.0%	5.3%	4.5%	6.7%
Black CVAP	164	227	629	291	264
Black CVAP %	1.2%	1.8%	3.9%	2.0%	1.8%

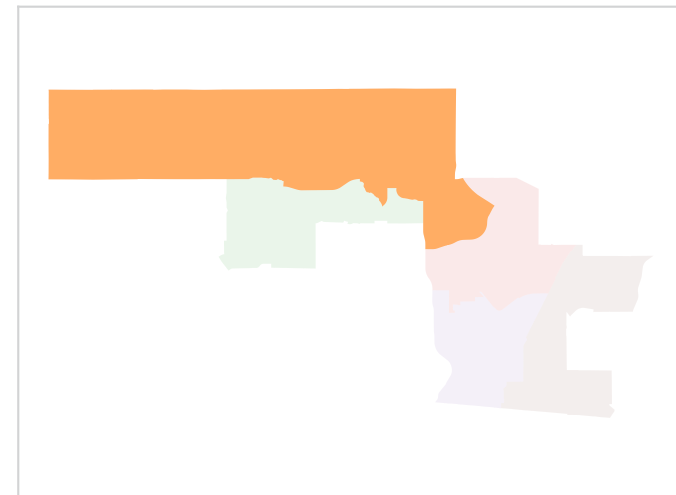
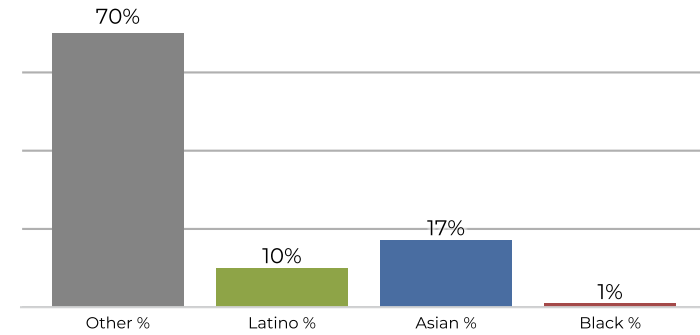
District 1



2020 Census

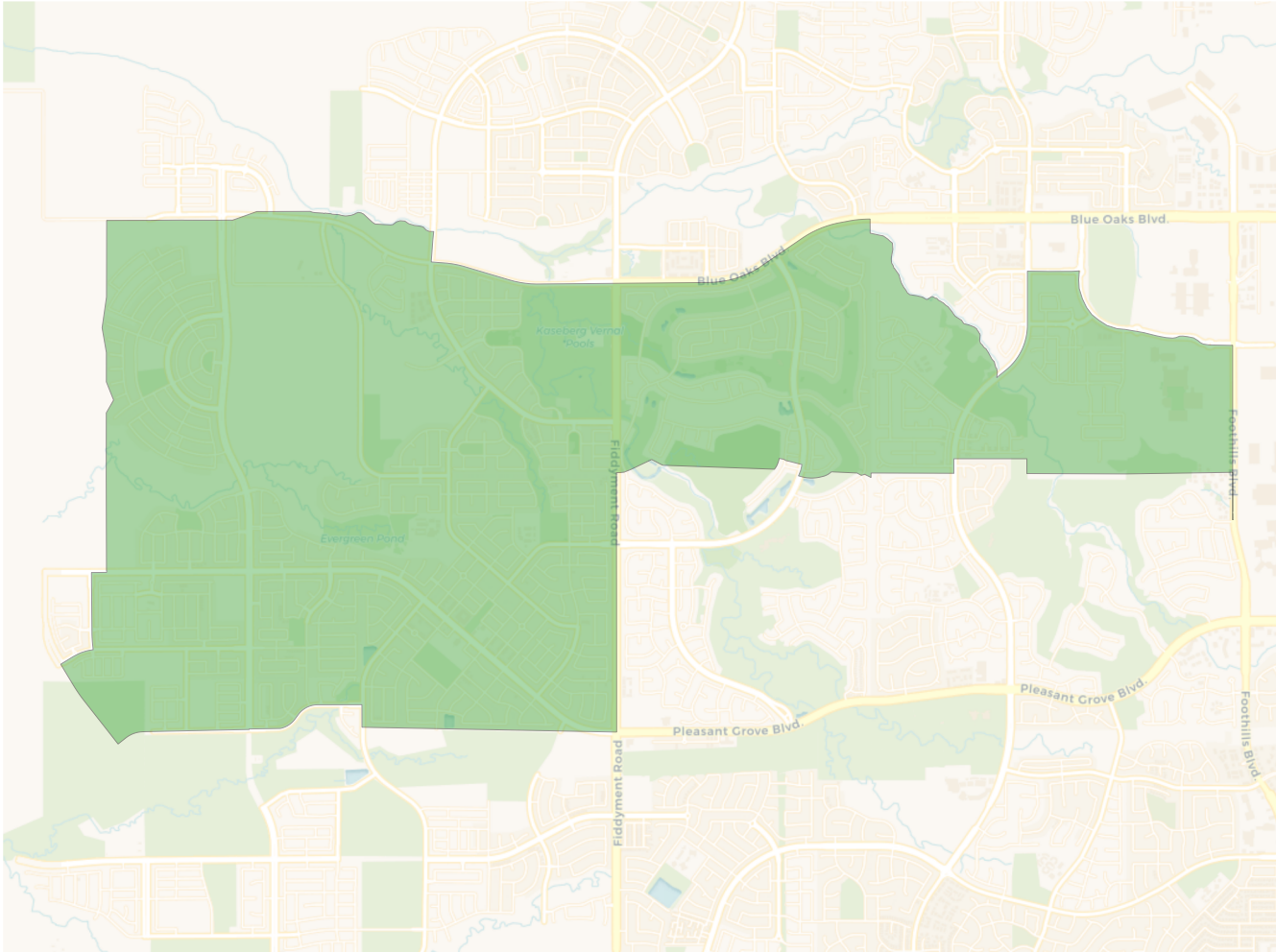


Citizen Voting Age Population

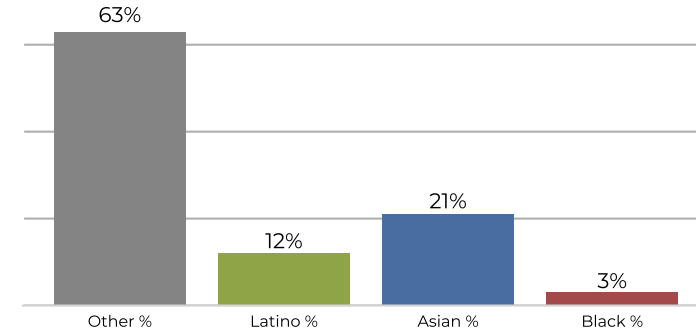


Population	Deviation	Deviation %	Other	Other %	Latino	Latino %	Asian	Asian %	Black	Black %
22,942	750	3.4%	14,901	65.0%	3,129	13.6%	4,246	18.5%	666	2.9%
Total CVAP	Other CVAP	Other CVAP %	Latino CVAP	Latino CVAP %	Asian CVAP	Asian CVAP %	Black CVAP	Black CVAP %		
13,687	9,633	70.4%	1,435	10.5%	2,455	17.9%	164	1.2%		

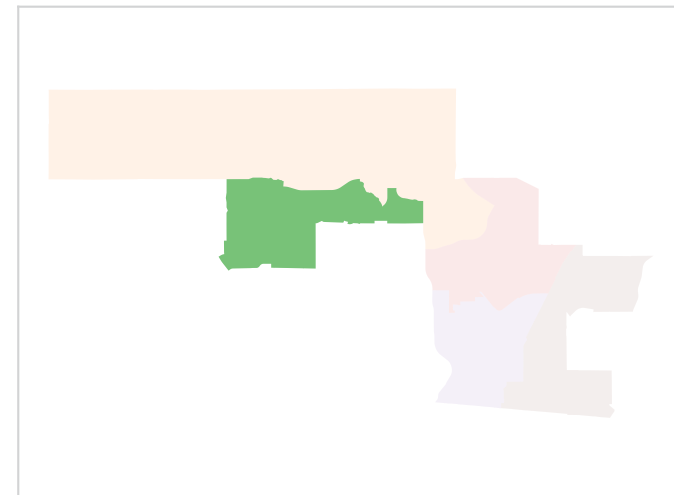
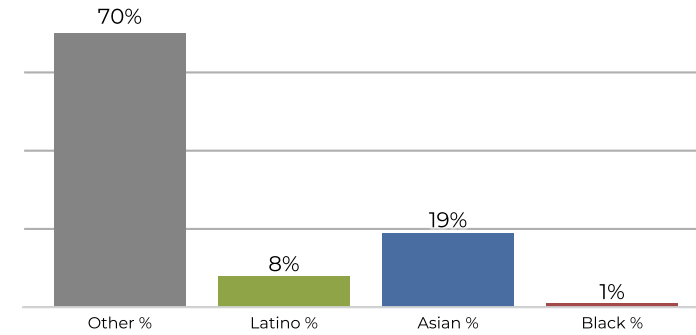
District 2



2020 Census

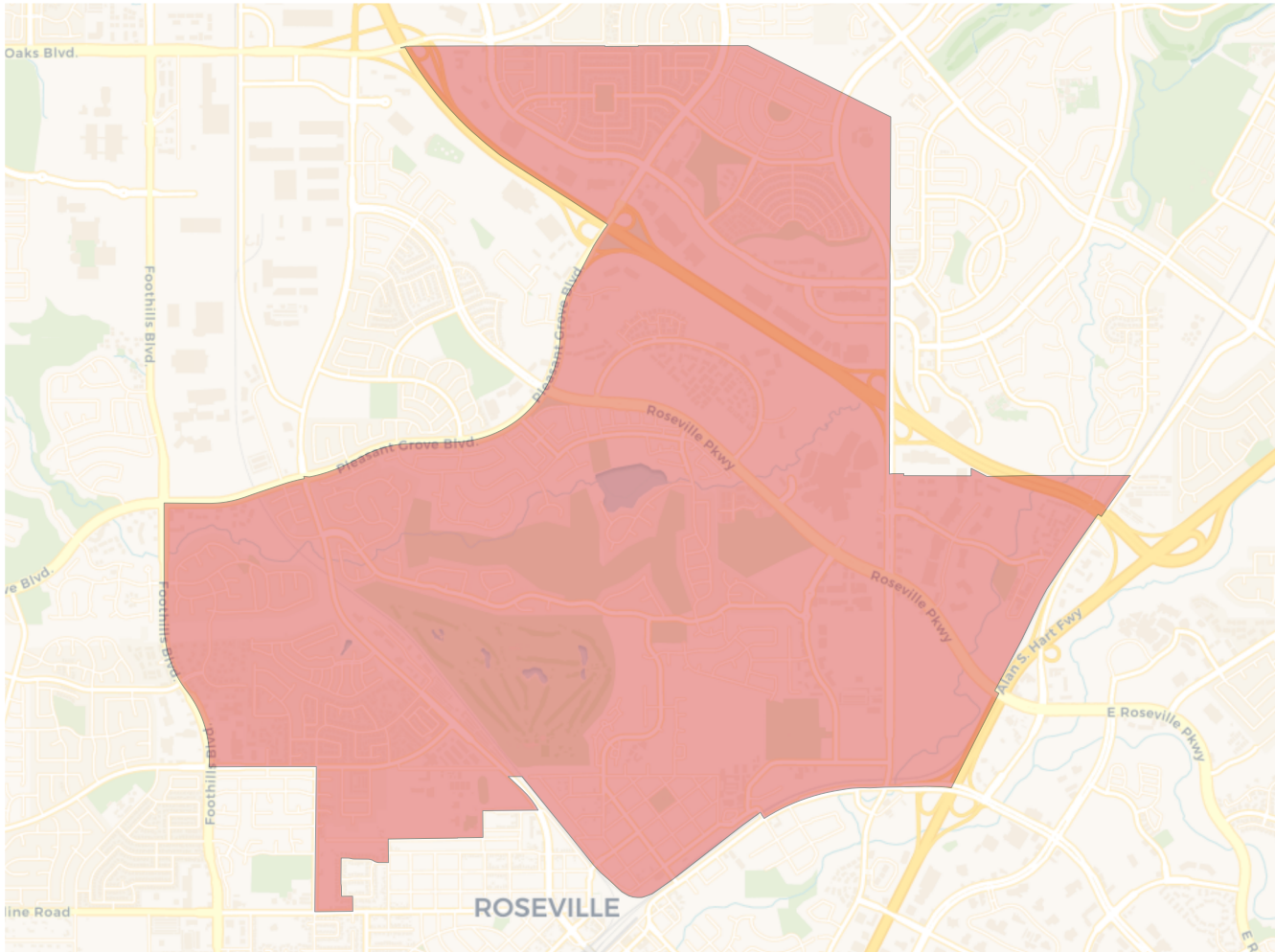


Citizen Voting Age Population

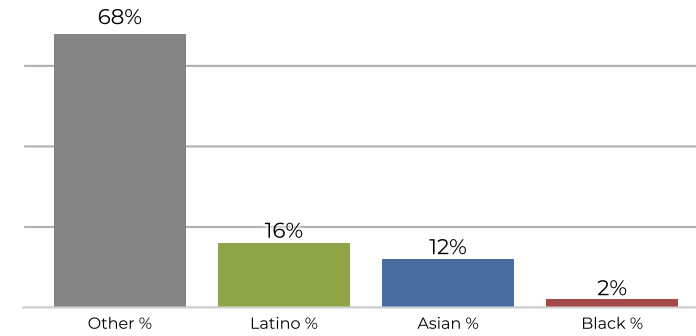


Population	Deviation	Deviation %	Other	Other %	Latino	Latino %	Asian	Asian %	Black	Black %
22,542	350	1.6%	14,293	63.4%	2,839	12.6%	4,737	21.0%	673	3.0%
Total CVAP	Other CVAP	Other CVAP %	Latino CVAP	Latino CVAP %	Asian CVAP	Asian CVAP %	Black CVAP	Black CVAP %		
12,411	8,777	70.7%	1,044	8.4%	2,363	19.0%	227	1.8%		

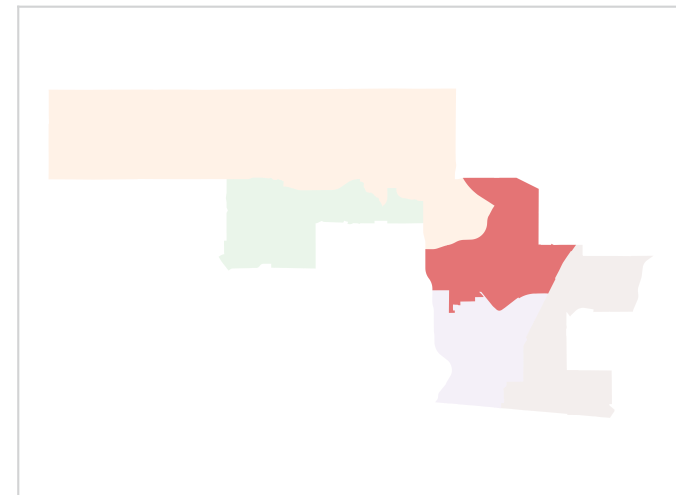
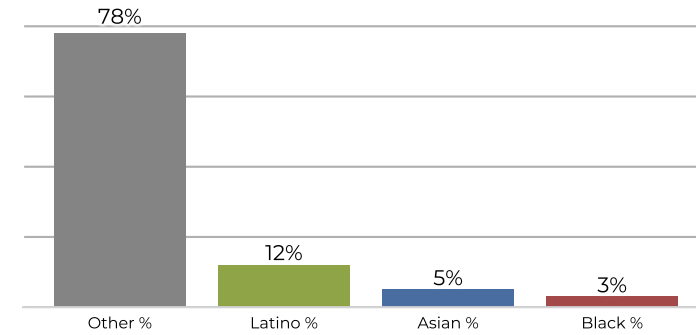
District 3



2020 Census

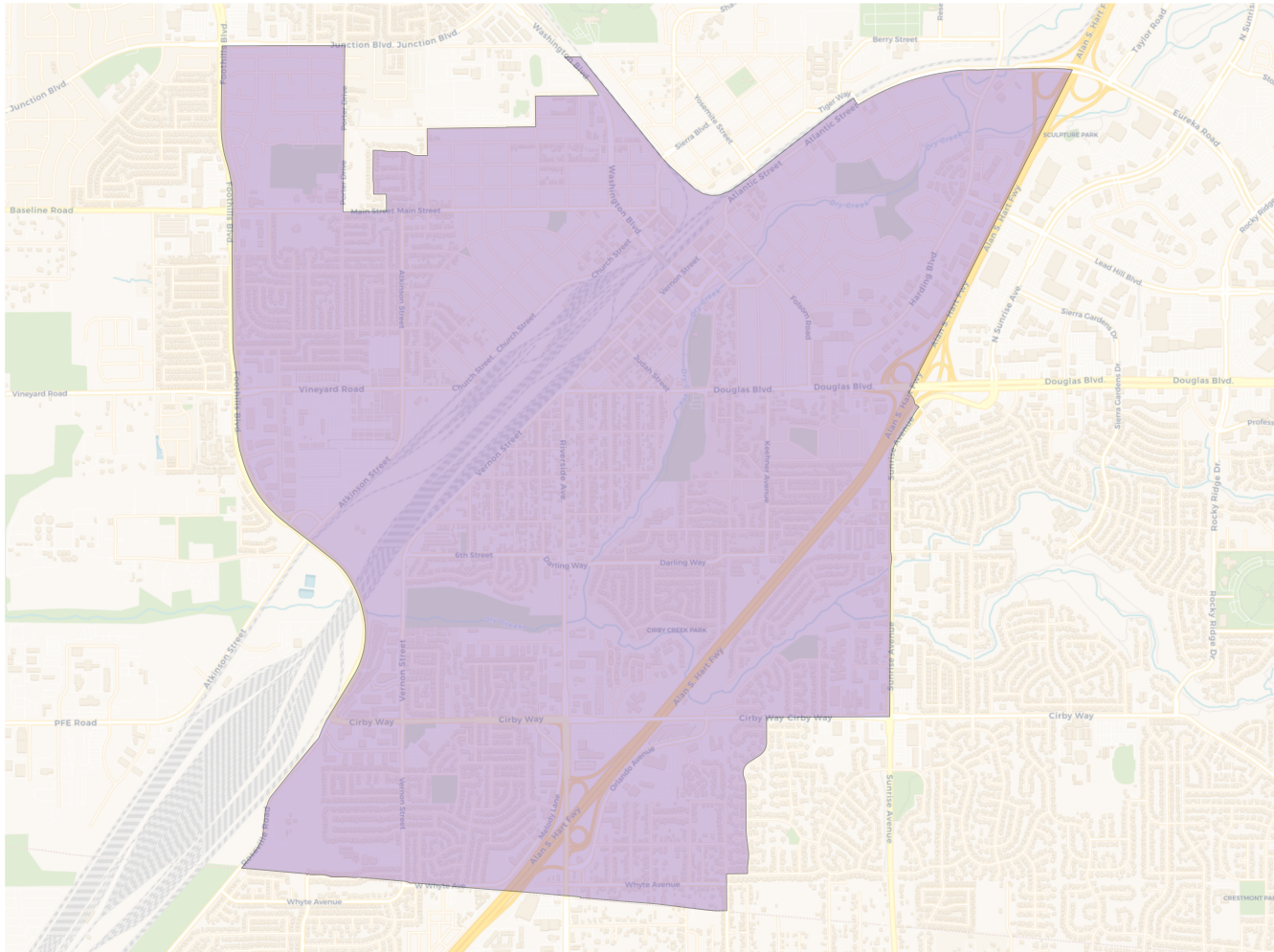


Citizen Voting Age Population

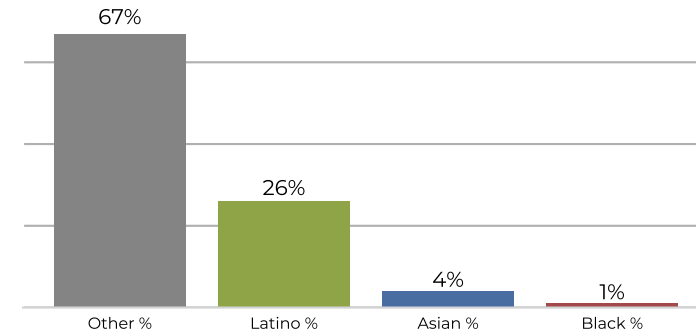


Population	Deviation	Deviation %	Other	Other %	Latino	Latino %	Asian	Asian %	Black	Black %
21,989	-203	-0.9%	15,086	68.6%	3,561	16.2%	2,701	12.3%	641	2.9%
Total CVAP	Other CVAP	Other CVAP %	Latino CVAP	Latino CVAP %	Asian CVAP	Asian CVAP %	Black CVAP	Black CVAP %		
16,163	12,648	78.3%	2,028	12.5%	858	5.3%	629	3.9%		

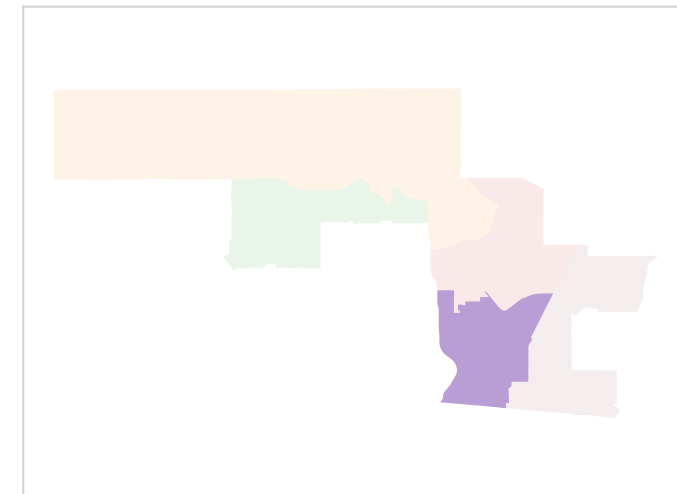
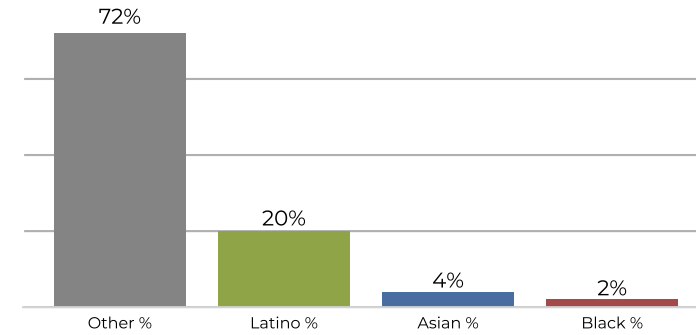
District 4



2020 Census

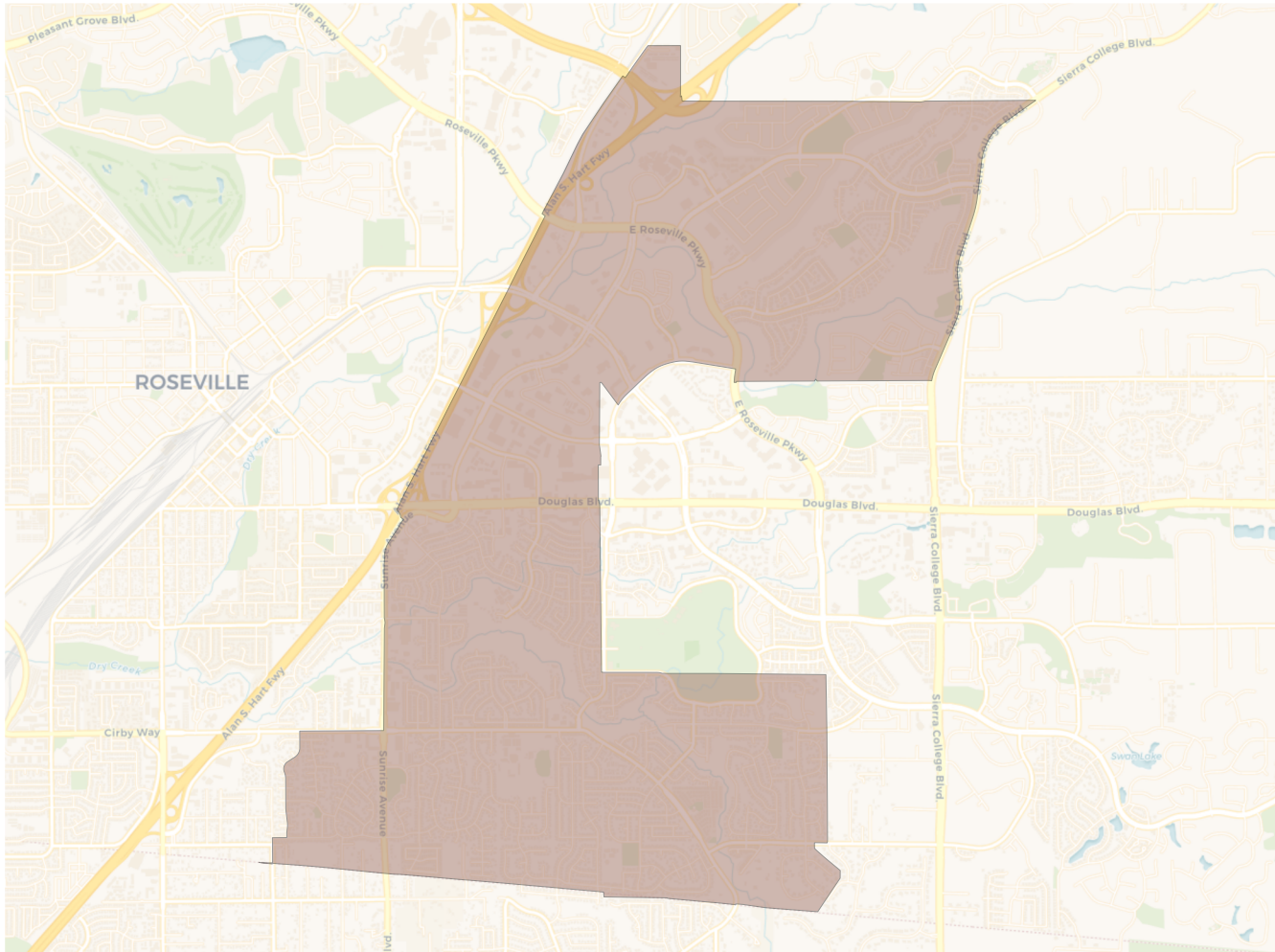


Citizen Voting Age Population

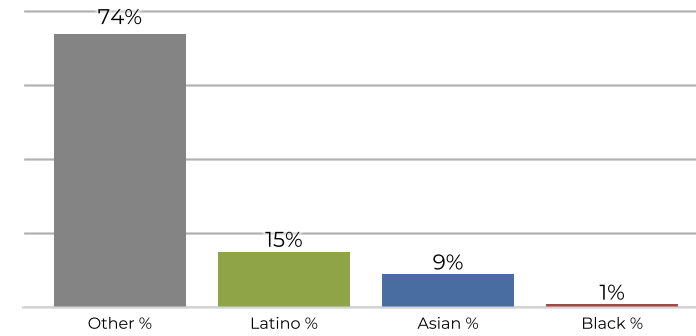


Population	Deviation	Deviation %	Other	Other %	Latino	Latino %	Asian	Asian %	Black	Black %
21,740	-452	-2.0%	14,696	67.6%	5,750	26.4%	906	4.2%	388	1.8%
Total CVAP	Other CVAP	Other CVAP %	Latino CVAP	Latino CVAP %	Asian CVAP	Asian CVAP %	Black CVAP	Black CVAP %		
14,483	10,554	72.9%	2,989	20.6%	649	4.5%	291	2.0%		

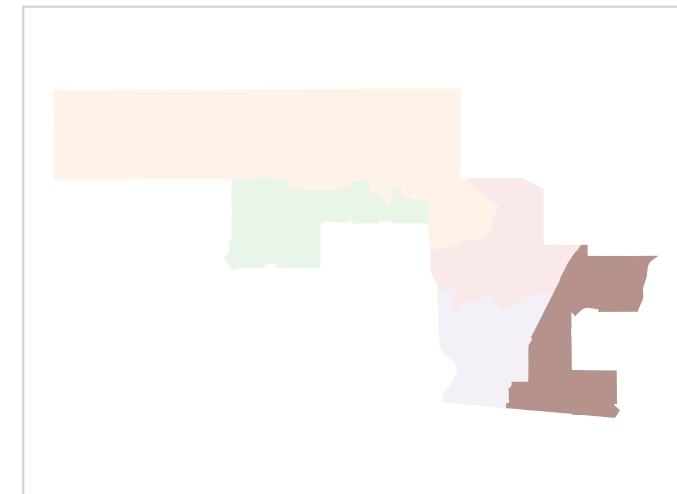
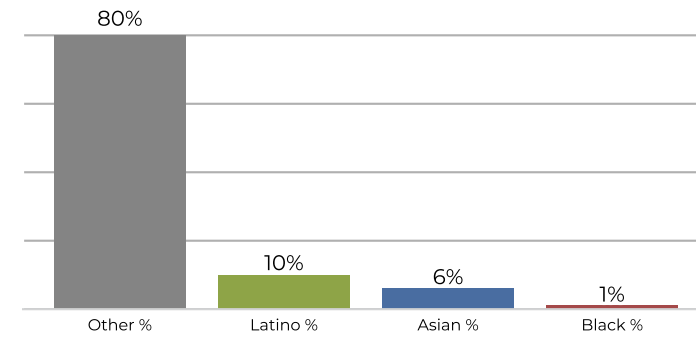
District 5



2020 Census



Citizen Voting Age Population



Population	Deviation	Deviation %	Other	Other %	Latino	Latino %	Asian	Asian %	Black	Black %
21,746	-446	-2.0%	16,091	74.0%	3,341	15.4%	1,967	9.0%	347	1.6%
Total CVAP	Other CVAP	Other CVAP %	Latino CVAP	Latino CVAP %	Asian CVAP	Asian CVAP %	Black CVAP	Black CVAP %		
14,589	11,792	80.8%	1,556	10.7%	977	6.7%	264	1.8%		